

Parts Manual for

SNAPPER®

HYDRO DRIVE ELECTRIC CLUTCH 42" & 46" LAWN TRACTOR LT-125 SERIES

| <i>Model No.</i> | <i>Description</i> |
|------------------|--------------------|
| 2690808 | LT23420 |
| 2690809 | LT24460 |



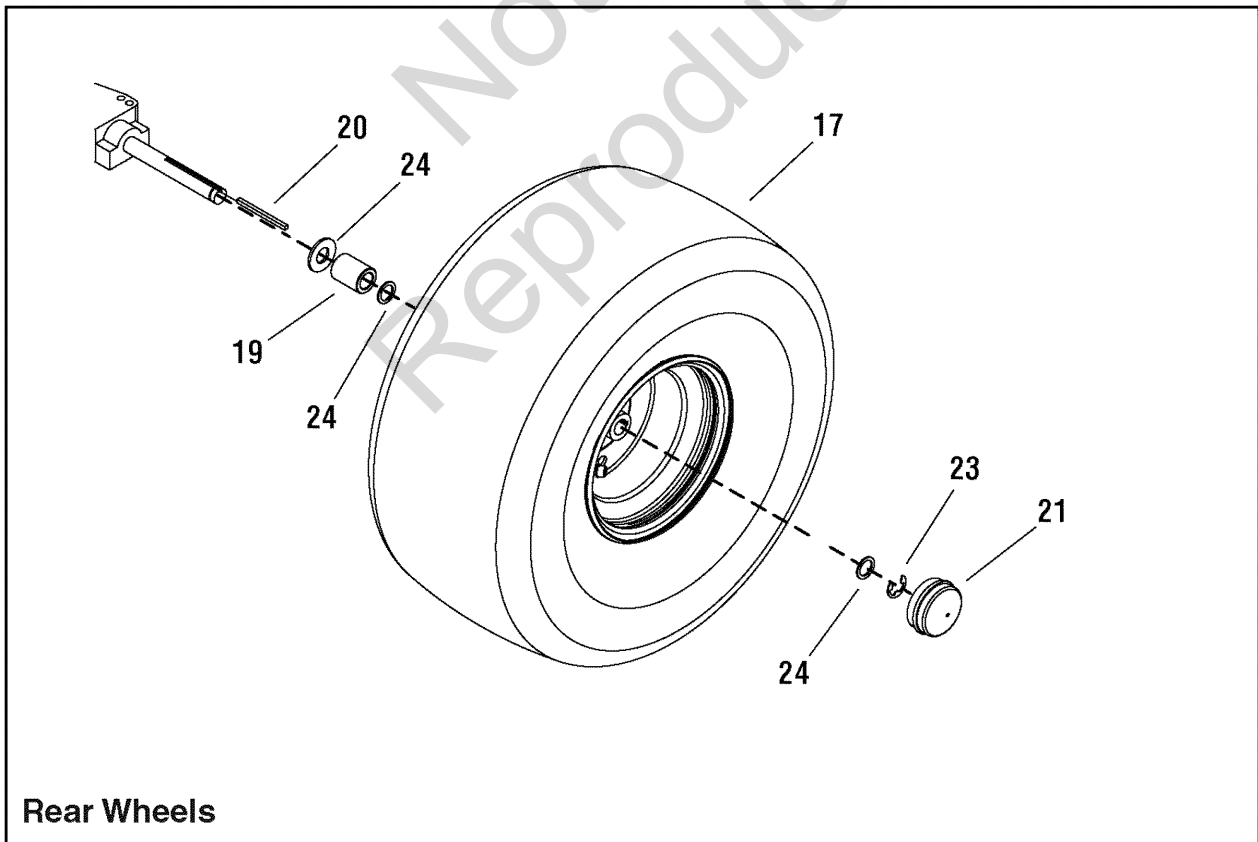
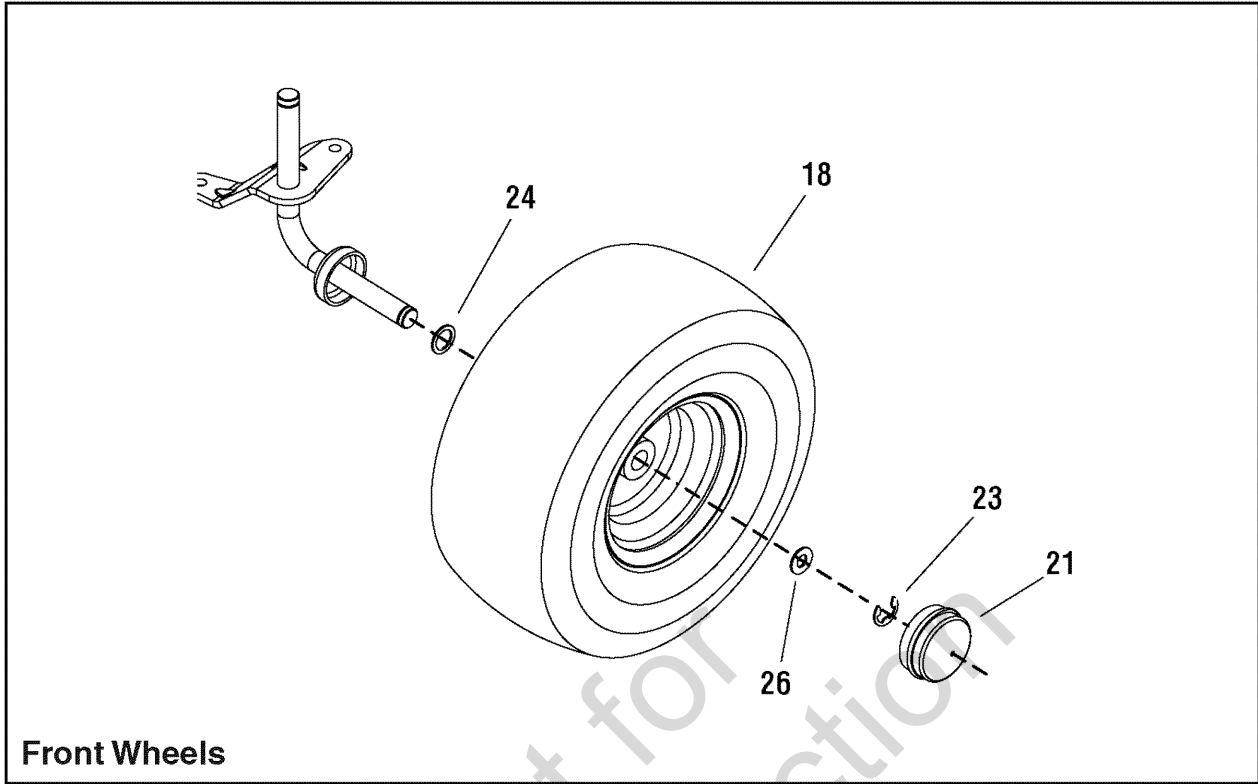
Briggs & Stratton Yard Power Products Group
535 Macon Road
McDonough, GA, 30253 U.S.A.
800-935-2967

Manual No. 7006275
Revision: A 8/20/2010

Not for
Reproduction

| PAGE | GROUP |
|-------------|---|
| 4 | Wheels & Tires Group |
| 6 | Hood, Grille & Dash Group |
| 8 | Seat Deck & Fuel Tank Group |
| 10 | Steering Group |
| 12 | Frame & Front Axle Group |
| 16 | Engine Group - 23HP |
| 18 | Engine Group - 24HP |
| 20 | Controls Group |
| 22 | Transmission Group |
| 24 | Lift Group - Manual |
| 26 | 42" Housing, Arbor & Blades Group |
| 28 | 42" Mower Deck - Belt, Idler Arm & Hitch Group |
| 30 | 42" Mower Deck - Height Adjustment & Roller Bar Group |
| 32 | 46" Mower Deck - Housing, Arbor & Blades Group |
| 34 | 46" Mower Deck - Clutch Group |
| 36 | Height Adjust Group - Frame Hung Mower |
| 38 | Decals Group - 42" Deck |
| 40 | Decals Group - 46" Deck |
| 42 | Electrical Group |

Not for
Reproduction



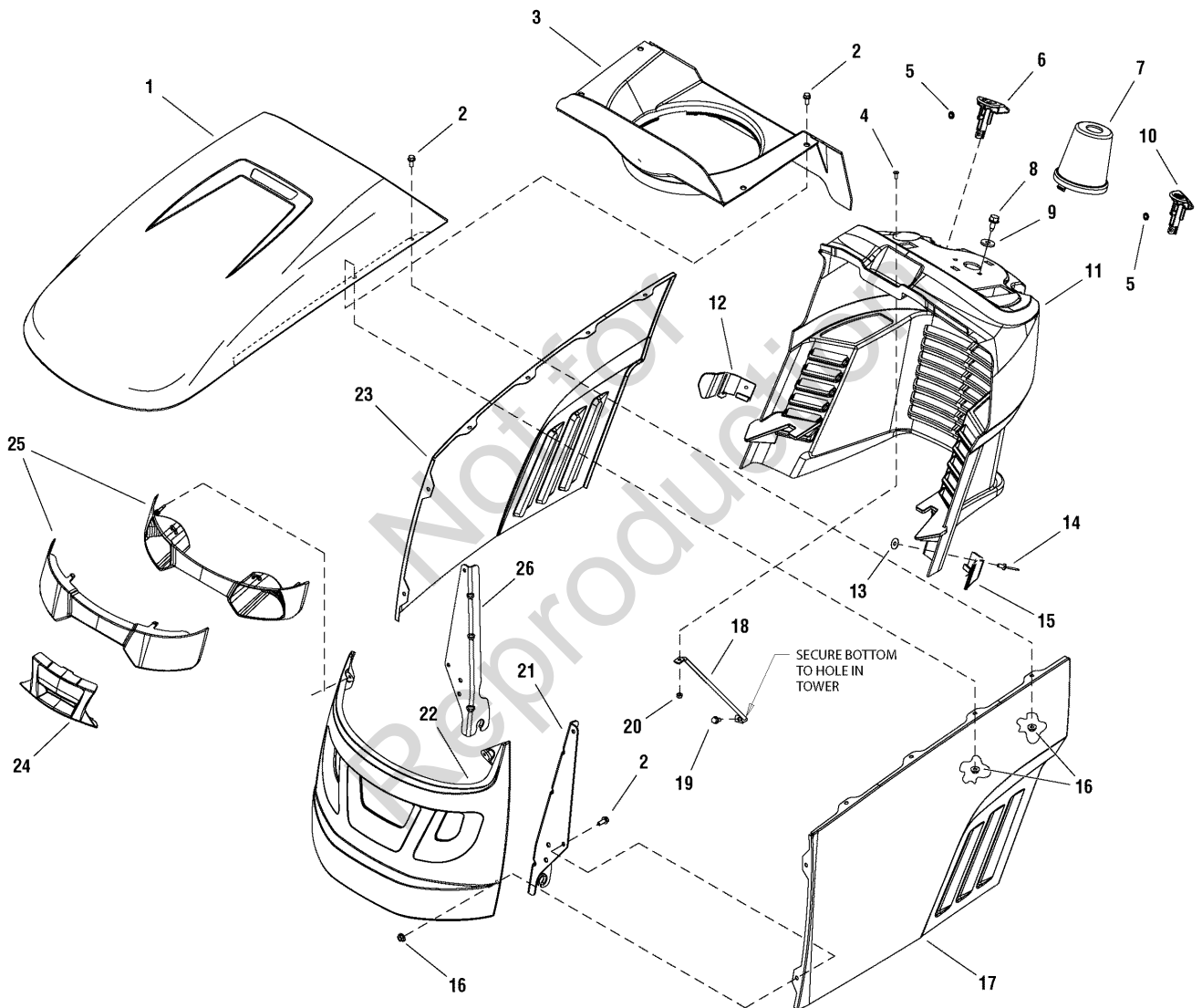
Wheels & Tires Group

| Item | Part No | Qty | Description |
|-------------|----------------|------------|--|
| 17 | 7101563 | 2 | Wheel & Tire, 22 x 10 - 8 |
| 18 | 1729708 | 2 | WHEEL & TIRE ASSEMBLY, 14.4 X 6 |
| -- | 1742259 | 4 | BEARING, Front Wheel, 3/4" ID Hard (Not shown) (Two per wheel) |
| -- | 2812808 | 1 | FITTING, Lube, 1/4 (Not shown) |
| 19 | 1730181 | 2 | SPACER, 0.77 ID x 1-1/4 OD x 1.65 LG Powdered Metal Black |
| 20 | 720258 | 2 | KEY, 3/16 |
| 21 | 721318 | 4 | HUB CAP |
| 23 | 720010 | 4 | RING, "E", .750 D - .050 T |
| 24 | 722598 | 6 | WASHER, .76-1.2 16G FL |
| 26 | 722620 | 4 | WASHER, FLAT |

Not for
Reproduction

Footnotes:

Hood, Grille & Dash Group



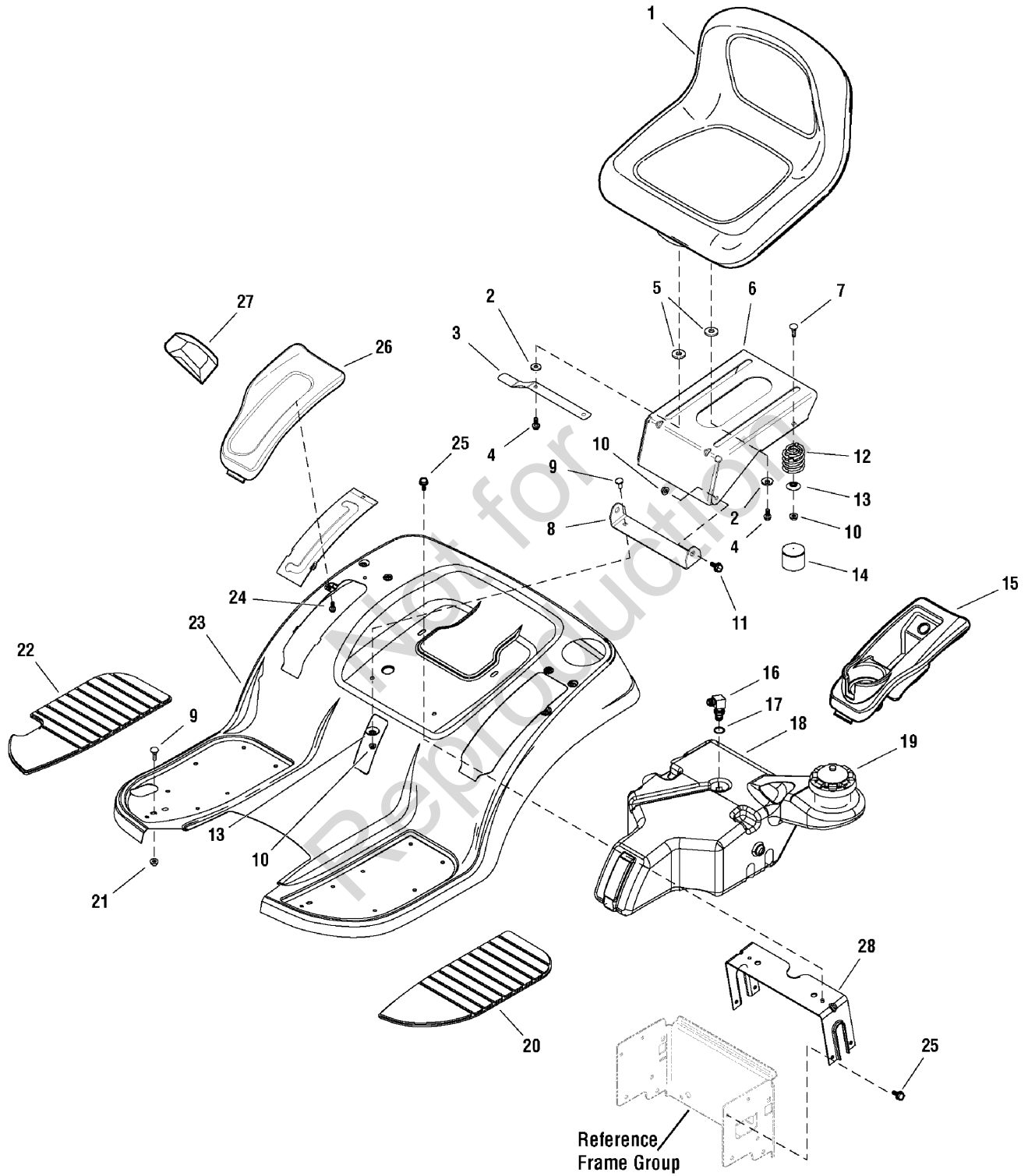
Hood, Grille & Dash Group

| Item | Part No | Qty | Description |
|------|----------|-----|--|
| 1 | 1728031D | 1 | HOOD, with Louver, (Red) |
| 2 | 1960295 | 12 | CAPSCREW, Whizlock, 1/4-20 x 5/8 |
| 3 | 7102326 | 1 | DUCT, Air Inlet Plastic |
| 4 | 1960392 | 3 | SCREW, Pan Head #10-24 x 1/2 |
| 5 | 1960518 | 2 | NUT, Push Pal |
| 6 | 1728090 | 1 | KNOB, Cruise Lock Green Plastic |
| 7 | 1736672 | 1 | COVER, Steering Shaft Plastic |
| 8 | 1664847 | 2 | CAPSCREW, Hex Head, Taptite, 5/16-18 x 3/4 |
| 9 | 1919381 | 2 | WASHER, Plain, 5/16 |
| 10 | 1728089 | 1 | KNOB, Brake Lock Plastic |
| 11 | 1736671 | 1 | DASHBOARD |
| 12 | 1732031 | 1 | GUIDE, Hood RH |
| 13 | 1960096 | 2 | WASHER |
| 14 | 1928707 | 2 | RIVET, Pop, Stem Black |
| 15 | 1732030 | 1 | GUIDE, Hood LH |
| 16 | 1930641 | 12 | NUT, Hex Flange Whiz, 1/4-20 |
| 17 | 1727295D | 1 | PANEL, Hood LH Side |
| 18 | 1723123 | 1 | ROD, Dash Support |
| 19 | 1925003 | 1 | SCREW, Self-Tap |
| 20 | 1933896 | 1 | NUT, Hex, Nylon, Lock, #10-24 |
| 21 | 1727279A | 1 | HINGE, Hood LH |
| 22 | 1728059D | 1 | GRILLE |
| 23 | 1727294D | 1 | PANEL, Hood RH Side |
| 24 | 7101810 | 1 | INSERT, Lightbar |
| 25 | 1727296 | 1 | HEADLIGHT ASSEMBLY |
| 26 | 1727280A | 1 | HINGE, Hood RH |

Not for
Reproduction

Footnotes:

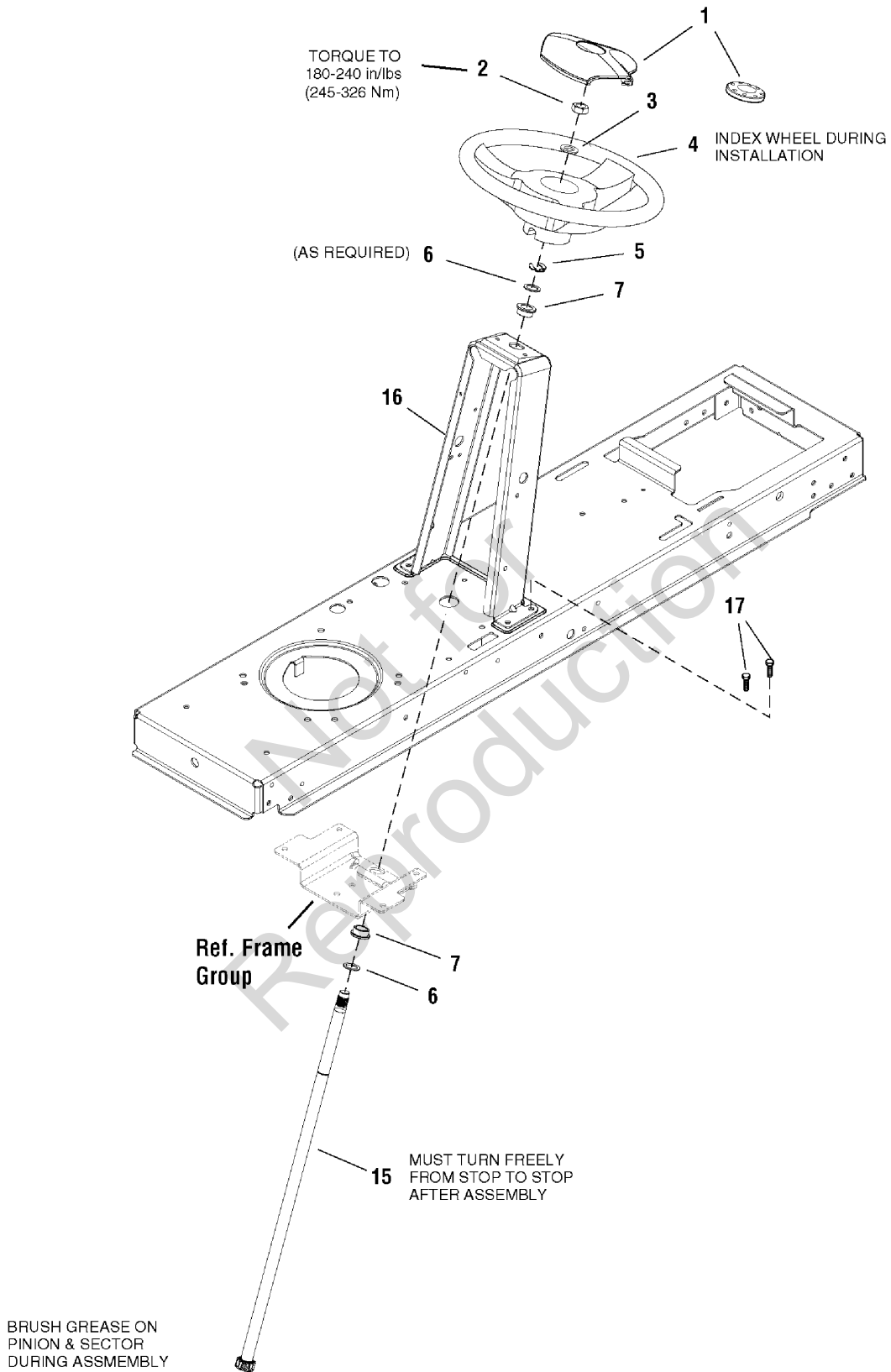
Seat Deck & Fuel Tank Group



Seat Deck & Fuel Tank Group

| Item | Part No | Qty | Description |
|------|----------|-----|---|
| 1 | 1736678 | 1 | SEAT, Hi Back, Steel Pan |
| 2 | 1919381 | 4 | WASHER, Plain, 5/16 |
| 3 | 1727268 | 1 | LATCH, Seat 20GA E-Coat |
| 4 | 1960667 | 4 | CAPSCREW, Hex Head Flange Dog Point, 5/16-18 x 1 |
| 5 | 1731300 | 4 | SPACER, 0.32 ID x 1-1/2 OD x 3/10 THK Powdered Metal Yellow |
| 6 | 1727265A | 1 | SUPPORT, Seat 12GA |
| 7 | 1960282 | 2 | CARRIAGE BOLT, 5/16-18 x 3/4 |
| 8 | 1727266A | 1 | PIVOT, Seat 10GA |
| 9 | 1931333 | 4 | BOLT, Carriage, 5/16-18 x 3/4 |
| 10 | 1960686 | 4 | NUT, Hex Flange, 5/16-18 ESNA |
| 11 | 1729576 | 2 | BOLT, Shoulder 5/16-18 G5 |
| 12 | 1704728 | 2 | SPRING, Compression |
| 13 | 1709256 | 4 | WASHER, Spring Black |
| 14 | 1704724 | 2 | COVER, Spring |
| 15 | 1736676 | 1 | POD, LH Cup Holder |
| 16 | 1674231 | 1 | ELBOW FITTING |
| 17 | 1654930 | 1 | BUSHING |
| 18 | 1727305 | 1 | TANK, Fuel |
| 19 | 5101651 | 1 | CAP, Gas |
| 20 | 1736673 | 1 | PAD, Footrest LH |
| 21 | 1931277 | 4 | NUT, Hex, Flange Whizlock, 5/16-18 |
| 22 | 1736674 | 1 | PAD, Footrest RH |
| 23 | 1727264D | 1 | DECK, Seat w/Footrests |
| 24 | 1960536 | 6 | SCREW, Hex, Washer Head, Plastite, 1/4-20 x 1/2 |
| 25 | 1930601 | 2 | SCREW, Taptite, 5/16-18 x 5/8 |
| 26 | 1736675 | 1 | POD, RH Lift Quadrant |
| 27 | 1736679 | 1 | GRIP, Lift |
| 28 | 1731310A | 1 | SUPPORT, Seat |

Footnotes:



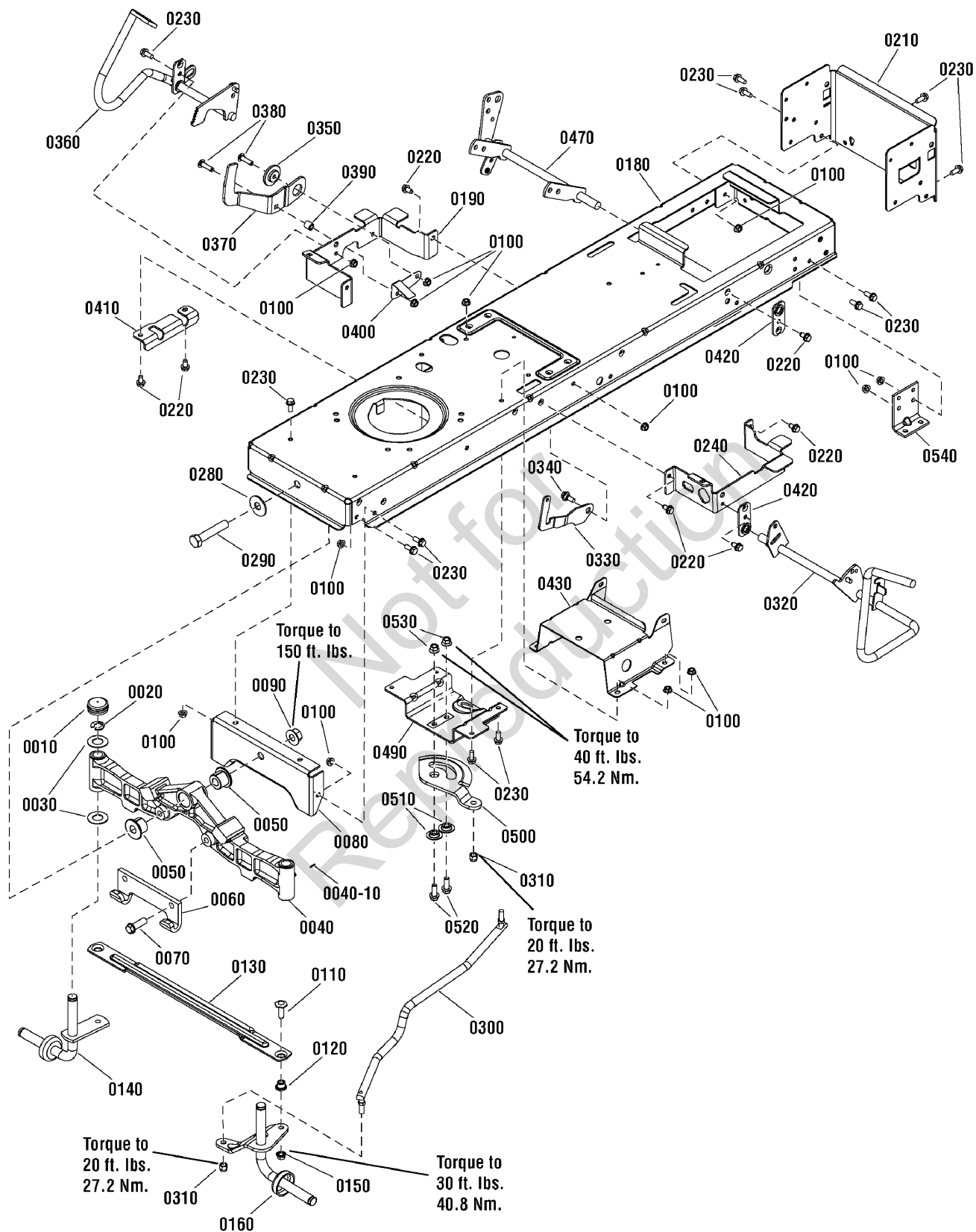
Steering Group

| Item | Part No | Qty | Description |
|------|----------|-----|---|
| 1 | 1725024 | 1 | CAP, Steering Wheel, Plain |
| 2 | 1960576 | 1 | NUT, Hex Lock, ESNA Light, 5/8-18, Thin |
| 3 | 1924366 | 1 | WASHER, 5/8 |
| 4 | 7078088 | 1 | STEERING WHEEL, w/Aluminum Insert |
| 5 | 1611710 | 1 | RING, Klipring Extension |
| 6 | 1960114 | 2 | WASHER |
| 7 | 1729665 | 2 | BUSHING, Steering |
| 15 | 1727813 | 1 | SHAFT, Steering Gear & Spline Yellow |
| 16 | 1738935A | 1 | TOWER |
| 17 | 1930601 | 4 | CAPSCREW, Hex Washer Head, Taptite, 5/16-18 x 5/8 |

Not for
Reproduction

Footnotes:

Frame & Front Axle Group

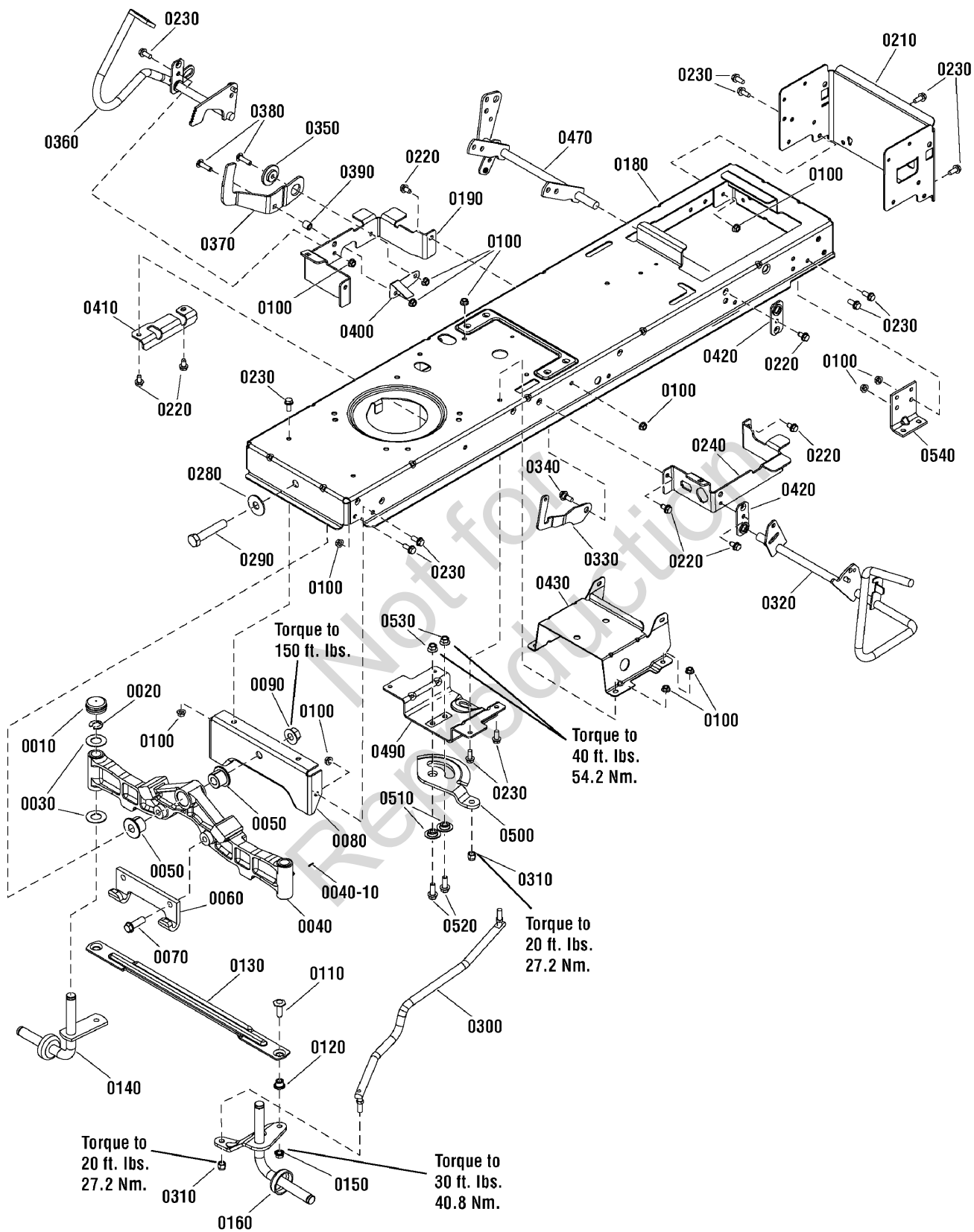


Frame & Front Axle Group

| Item | Part No | Qty | Description |
|---------|----------|-----|---|
| 0010 | 1726504 | 2 | CAP, Hub |
| 0020 | 1611710 | 2 | RING, Klipring Extension |
| 0030 | 2860183 | 4 | WASHER, 3/4 |
| 0040 | 1728018 | 1 | AXLE, Front Iron Casting Machined |
| 0040-10 | 1704314 | 3 | FITTING, Zerk |
| 0050 | 1730186 | 2 | BUSHING, Axle Pivot Powdered Metal |
| 0060 | 1721918A | 1 | HOOK, "J" |
| 0070 | 1960652 | 2 | CAPSCREW, 7/16-14 x 1.5 |
| 0080 | 1727902A | 1 | PLATE, Axle Support |
| 0090 | 2860646 | 1 | NUT, Hex Flange Two-Way Lock, 5/8-11 |
| 0100 | 1931277 | 16 | NUT, Hex, Flange Whizlock, 5/16-18 |
| 0120 | 1731912 | 2 | BUSHING, Powdered Metal |
| 0130 | 1728080A | 1 | ROD, Tie |
| 0140 | 1727872A | 1 | SPINDLE & CUP ASSEMBLY, RH |
| 0150 | 1930645 | 2 | NUT, Hex, Flange, Locking, 3/8-16 |
| 0160 | 1727873A | 1 | SPINDLE & ARM ASSEMBLY, LH |
| 0180 | 1738937 | 1 | FRAME, 12 GA |
| 0190 | 1727904A | 1 | SUPPORT, Front Footrest RH |
| 0210 | 17368760 | 1 | SUPPORT, Rear Frame |
| 0220 | 1930601 | 14 | SCREW, Taptite, 5/16-18 x 5/8 |
| 0230 | 1930591 | 14 | CAPSCREW, Hex Head, Flange Whiz Lock, 5/16-18 x 3/4 |
| 0240 | 1727905A | 1 | SUPPORT, Front Footrest LH |
| 0280 | 1960035 | 1 | WASHER, Flat, 5/8 |
| 0290 | 2860744 | 1 | CAPSCREW, Hex Head, 5/8-11 x 3-1/4 G5 |
| 0300 | 1727868 | 1 | LINK, Drag |
| 0310 | 1960747 | 2 | NUT, Hex Nylock 3/8-24 |
| 0320 | 1727252A | 1 | PEDAL ASSEMBLY, Brake |
| 0110 | 1960032 | 2 | CAPSCREW, Hex Head, 3/8-16 x 1-1/4, .141 Thread G5 |
| 0330 | 1727269A | 1 | LATCH, Brake Lock |
| 0340 | 1729576 | 1 | BOLT, Shoulder, 5/16-18 x 1-1/8 |
| 0350 | 1727935 | 1 | SPACER, Pivot |
| 0360 | 1727250A | 1 | PEDAL ASSEMBLY, Forward |
| 0370 | 1727246A | 1 | PEDAL, Reverse |
| 0380 | 1960223 | 2 | BOLT, Carriage, 5/16-18 x 1-1/4 |
| 0390 | 1728024 | 1 | SPACER, Foot Pedal |
| 0400 | 1728025 | 1 | ACTUATOR, RMO Switch |
| 0410 | 1727909A | 1 | BRACKET, Pedal Pivot |
| 0420 | 1727911A | 2 | PLATE, Bearing |
| 0430 | 1727282A | 1 | SUPPORT, Battery |
| 0470 | 1737957 | 1 | LIFT SHAFT ASSEMBLY |
| 0490 | 1727940A | 1 | BRACKET, Sector Support |
| 0500 | 1728027 | 1 | GEAR, Steering |
| 0510 | 1728122 | 2 | SPACER, Sector Gear |
| 0520 | 1934654 | 2 | CAPSCREW, Hex Flange Whiz Lock, 3/8-16 x 1 |

Footnotes:

Frame & Front Axle Group

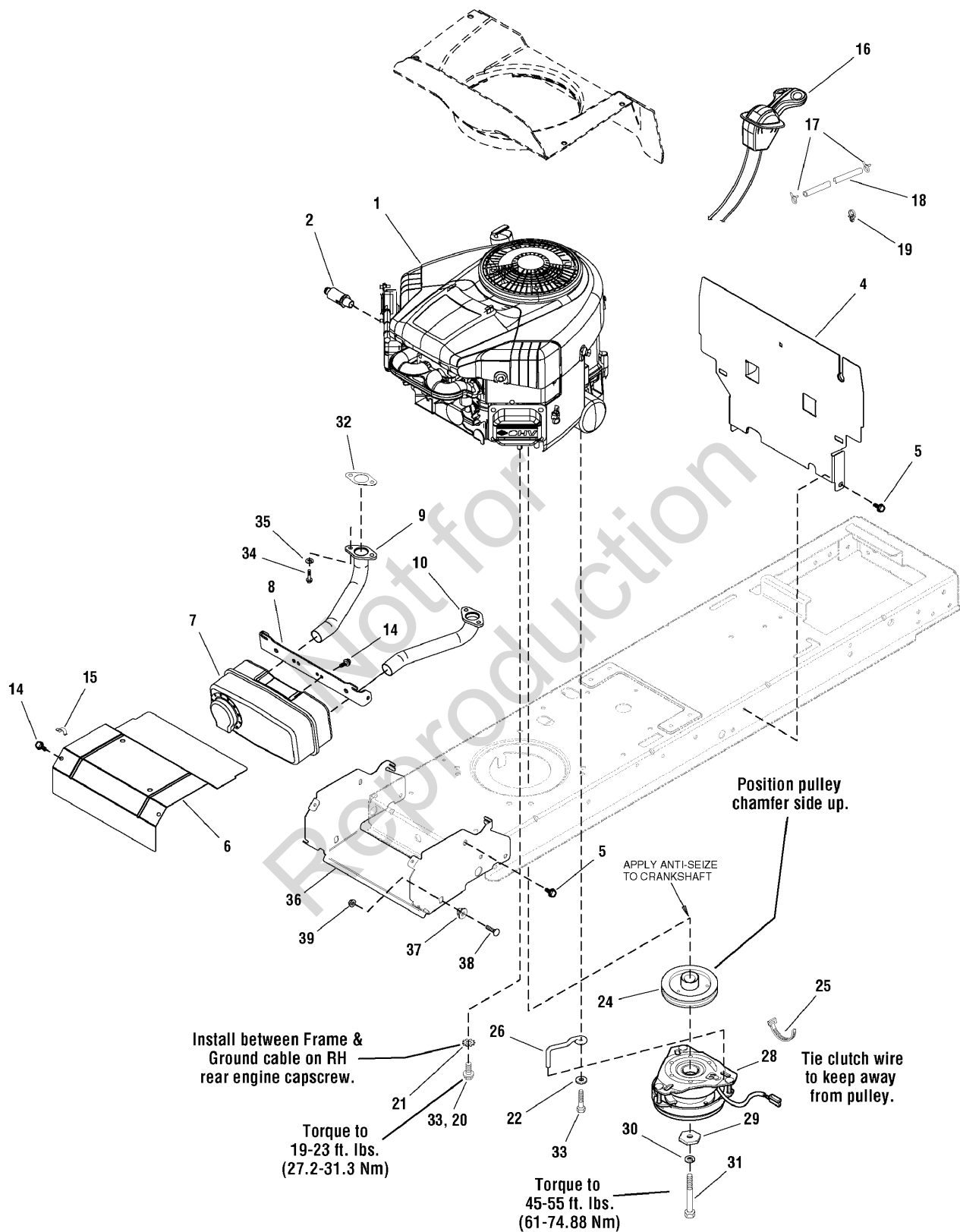


Frame & Front Axle Group

| Item | Part No | Qty | Description |
|------|---------|-----|-------------------------|
| 0530 | 1931211 | 2 | NUT, Hex Flange, 3/8-16 |
| 0540 | 1727903 | 2 | SUPPORT, Transmission |

Not for
Reproduction

Footnotes:

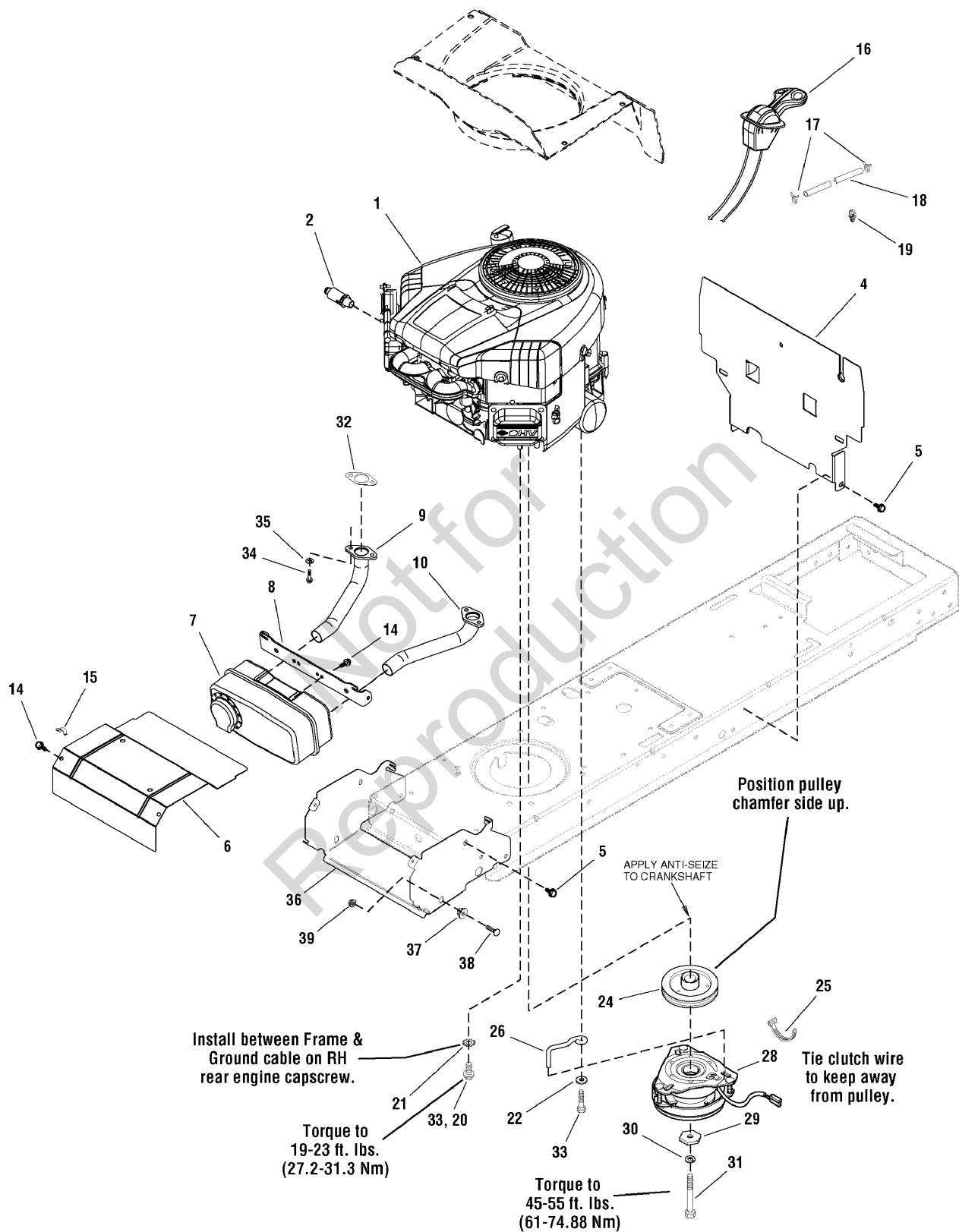


Engine Group - 23HP

| Item | Part No | Qty | Description |
|------|----------|-----|---|
| 1 | -- | 1 | * ENGINE, 23HP B&S Twin, Mod. 44L777-0128-B1 |
| 2 | 1717473 | 1 | VALVE, Shut Off Oil Drain |
| 4 | 1728058A | 1 | SHIELD, Heat |
| 5 | 1930601 | 4 | SCREW, Hex Washer Head Taptite 5/16-18 x 5/8 |
| 6 | 1727997A | 1 | SHIELD, Heat |
| 7 | 1727994 | 1 | MUFFLER |
| 8 | 1727976A | 1 | BRACKET, Muffler Mount |
| 9 | 1727979 | 1 | PIPE, Exhaust R.H. |
| 10 | 1727980 | 1 | PIPE, Exhaust L.H. |
| 14 | 1925003 | 4 | SCREW, Hex Washer Head Taptite 1/4-20 x 1/2 |
| 15 | 2834683 | 1 | CLIP, Speed Wire |
| 16 | 1734505 | 1 | CONTROL, Throttle (Choke a Matic) |
| 17 | 93053 | 2 | CLAMP, Hose |
| 18 | 1734993 | 1 | HOSE, Fuel |
| 19 | 1730268 | 2 | CLIP, Hose |
| 20 | 2827187 | 2 | SCREW, Hex Washer Head Taptite 3/8-16 x 1 |
| 21 | 2820427 | 1 | LOCKWASHER, External Tooth 3/8 |
| 22 | 1924940 | 1 | WASHER, 3/8 |
| 24 | 1732576 | 1 | PULLEY & HUB ASSEMBLY, Engine |
| 25 | 1701011 | 2 | TIE, Self Locking |
| 26 | 1732875 | 1 | RETAINER, Clutch |
| 28 | 1736105 | 1 | CLUTCH, Electric OGURA |
| 29 | 1708264 | 1 | WASHER, Hex |
| 30 | 1918199 | 1 | LOCKWASHER, Spring |
| 31 | 1960649 | 1 | CAPSCREW, Hex Head 7/16-20 x 3-1/2 G5 |
| 32 | 1731214 | 1 | GASKET, Exhaust |
| 33 | 2828635 | 1 | SCREW, Hex Washer Head Taptite 3/8-16 x 1-1/4 |
| 34 | 94480 | 2 | CAPSCREW, Hex Socket Head 5/16-18 x 3/4 G8 |
| 35 | 1917356 | 2 | LOCKWASHER, Spring, 5/16 |
| 36 | 1727982A | 1 | SUPPORT, Muffler |
| 37 | 1728086 | 2 | PIVOT, Hood |
| 38 | 1931335 | 2 | BOLT, Carriage, 5/16-18 x 1 |
| 39 | 1931277 | 2 | NUT, Hex Flange, 5/16-18 |

Footnotes:

NOTE* Purchase engine parts from engine manufacture dealer.

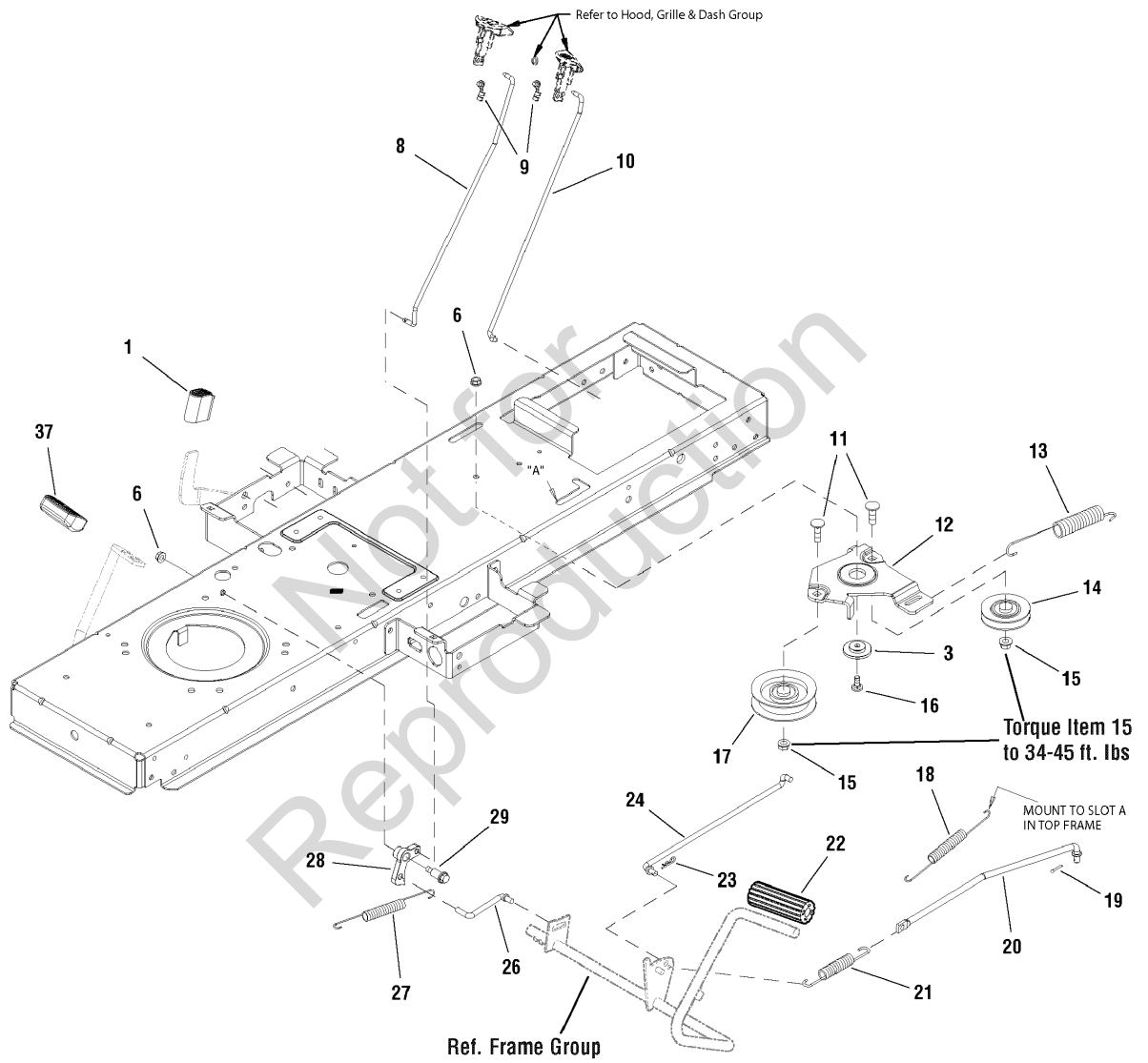


Engine Group - 24HP

| Item | Part No | Qty | Description |
|------|----------|-----|---|
| 1 | -- | 1 | * ENGINE, 24HP B&S Twin, Mod. 44M777-0139-B1 |
| 2 | 1717473 | 1 | VALVE, Shut Off Oil Drain |
| 4 | 1728058A | 1 | SHIELD, Heat |
| 5 | 1930601 | 4 | SCREW, Hex Washer Head Taptite 5/16-18 x 5/8 |
| 6 | 1727997A | 1 | SHIELD, Heat |
| 7 | 1727994 | 1 | MUFFLER |
| 8 | 1727976A | 1 | BRACKET, Muffler Mount |
| 9 | 1727979 | 1 | PIPE, Exhaust R.H. |
| 10 | 1727980 | 1 | PIPE, Exhaust L.H. |
| 14 | 1925003 | 4 | SCREW, Hex Washer Head Taptite 1/4-20 x 1/2 |
| 15 | 2834683 | 1 | CLIP, Speed Wire |
| 16 | 1734505 | 1 | CONTROL, Throttle (Choke a Matic) |
| 17 | 93053 | 2 | CLAMP, Hose |
| 18 | 1734993 | 1 | HOSE, Fuel |
| 19 | 1730268 | 2 | CLIP, Hose |
| 20 | 2827187 | 2 | SCREW, Hex Washer Head Taptite 3/8-16 x 1 |
| 21 | 2820427 | 1 | LOCKWASHER, External Tooth 3/8 |
| 22 | 1924940 | 1 | WASHER, 3/8 |
| 24 | 1732576 | 1 | PULLEY & HUB ASSEMBLY, Engine |
| 25 | 1701011 | 2 | TIE, Self Locking |
| 26 | 1737421A | 1 | GUIDE, Belt, Long |
| 28 | 1736105 | 1 | CLUTCH, Electric OGURA |
| 29 | 1708264 | 1 | WASHER, Hex |
| 30 | 1918199 | 1 | LOCKWASHER, Spring |
| 31 | 1960649 | 1 | CAPSCREW, Hex Head 7/16-20 x 3-1/2 G5 |
| 32 | 1731214 | 1 | GASKET, Exhaust |
| 33 | 2828635 | 1 | SCREW, Hex Washer Head Taptite 3/8-16 x 1-1/4 |
| 34 | 94480 | 2 | CAPSCREW, Hex Socket Head 5/16-18 x 3/4 G8 |

Footnotes:

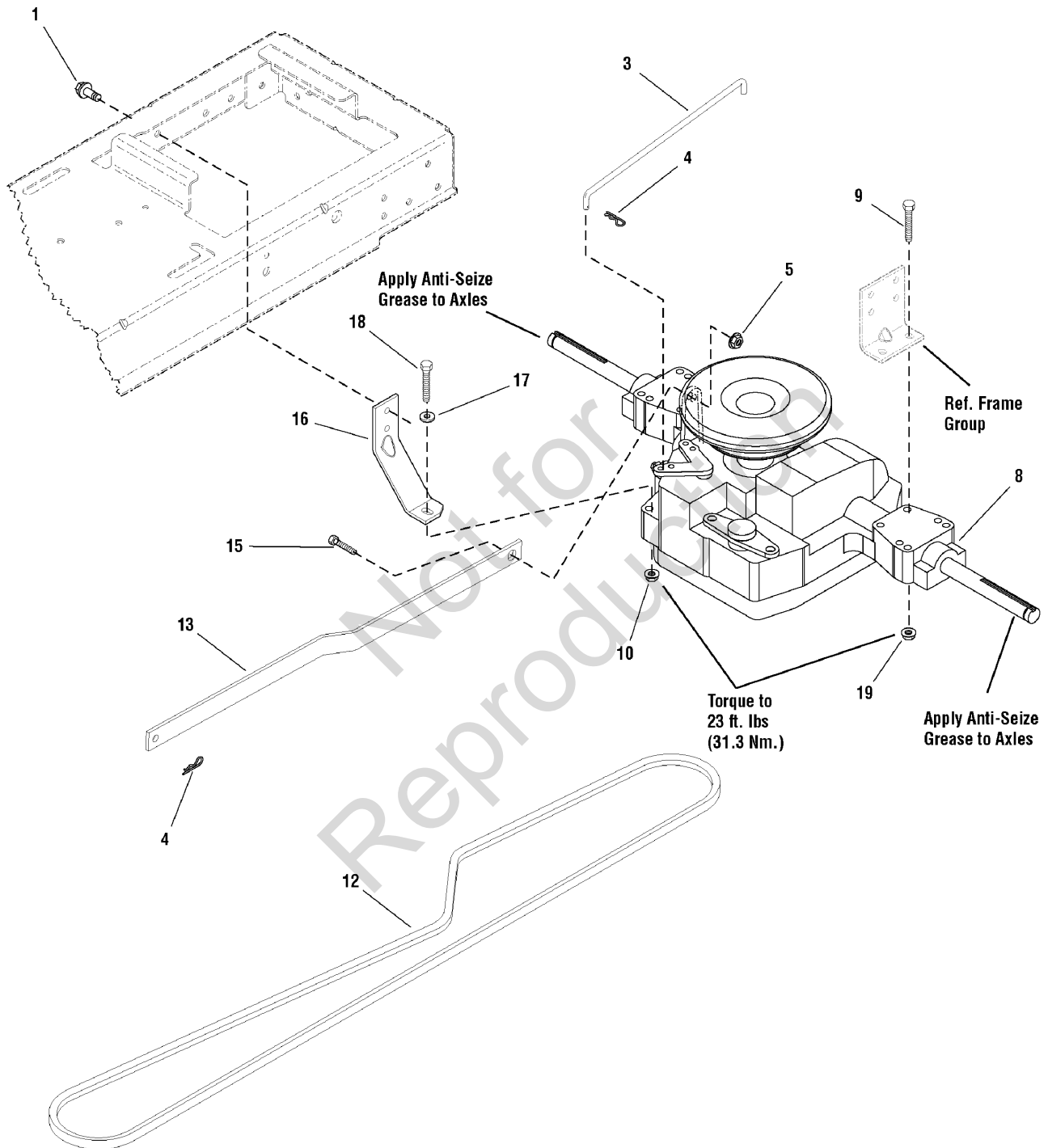
NOTE* Purchase engine parts from engine manufacture dealer.



Controls Group

| Item | Part No | Qty | Description |
|------|----------|-----|-------------------------------------|
| 1 | 1727259 | 1 | PAD, Foot Pedal Reverse |
| 3 | 1727935 | 2 | SPACER, Pivot Powdered Metal |
| 6 | 1931277 | 6 | NUT, Hex, Flange Whizlock, 5/16-18 |
| 8 | 1727898 | 1 | ROD, Cruise Latch, 16.97LG |
| 9 | 1728111 | 2 | CLIP, Linkage, Black |
| 10 | 1727267 | 1 | ROD, Parking Brake, 16.38 LG Yellow |
| 11 | 1960268 | 2 | BOLT, Carriage, 3/8-16 x 1-1/4 |
| 12 | 1727894A | 1 | BRACKET, Idler 7GA |
| 13 | 1729620 | 1 | SPRING, Extension 07.52 LG Black |
| 14 | 1728001 | 1 | PULLEY, 3 OD Plastic |
| 15 | 1960687 | 2 | NUT, Hex Flange, 3/8-16 ESNA |
| 16 | 1931335 | 1 | BOLT, Carriage, 5/16-18 x 1 |
| 17 | 1728000 | 1 | PULLEY, Idler |
| 18 | 1721995 | 1 | SPRING, Extension |
| 19 | 1918447 | 1 | PIN, Cotter 3/32 x 3/4 |
| 20 | 1727253 | 1 | ROD, Brake, 15.1 LG |
| 21 | 1731262 | 1 | SPRING, Extension 05.37 LG Black |
| 22 | 1727261 | 1 | PEDAL, Brake Rubber |
| 23 | 1722460 | 1 | PIN, Quick |
| 24 | 1727254 | 1 | ROD, Brake Return, 12.60 LG |
| 26 | 1727899 | 1 | ROD, Cruise Latch, 2.83 LG |
| 27 | 2159181 | 1 | SPRING, Tension, Clutch |
| 28 | 1727897 | 1 | LATCH, Cruise Powdered Metal |
| 29 | 1728976 | 1 | BOLT, Shoulder 5/16-18 G5 |
| 37 | 1721675 | 1 | PAD, Foot Pedal Forward |

Footnotes:

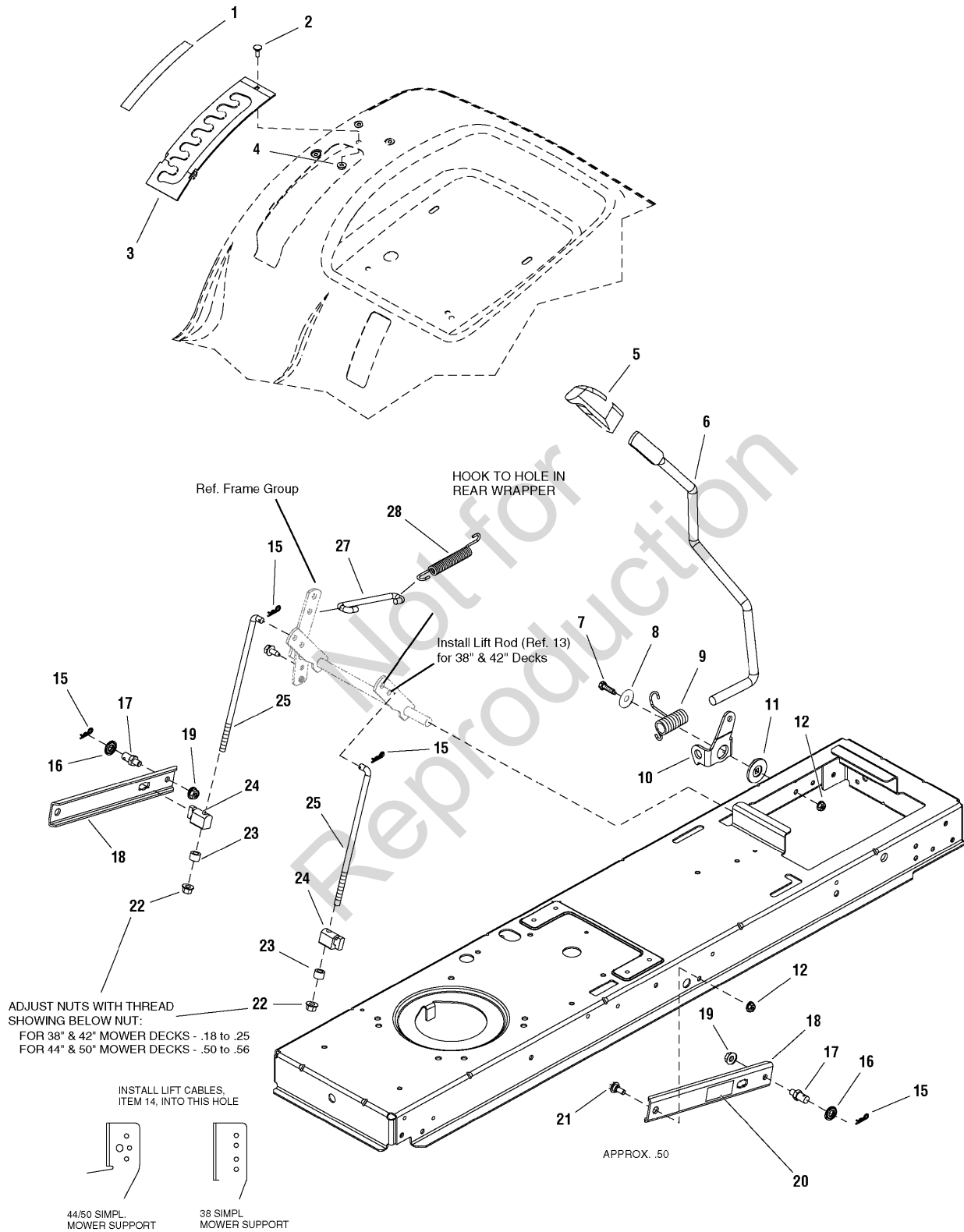


Transmission Group

| Item | Part No | Qty | Description |
|------|----------|-----|--|
| 1 | 1664847 | 1 | CAPSCREW, Hex Head, Taptite, 5/16-18 x 3/4 |
| 3 | 1728120 | 1 | ROD, Bypass, 11.44 LG Yellow |
| 4 | 1722460 | 2 | PIN, Quick |
| 5 | 1960686 | 1 | NUT, Hex Flange, 5/16-18 ESNA |
| 10 | 1960686 | 1 | NUT, Hex Flange, 5/16-18 ESNA |
| 12 | 1728008 | 1 | V-BELT, Drive Belt, Aramid/Kevlar |
| 13 | 1727258A | 1 | ARM, Control 7 GA |
| 15 | 1729576 | 1 | BOLT, Shoulder 5/16-18 G5 |
| 16 | 1728043A | 1 | STRAP, Torque 7 GA |
| 17 | 1919381 | 1 | WASHER, Plain, 5/16 |
| 18 | 1922127 | 1 | CAPSCREW, Hex Head, 5/16-18 x 1-3/4 |
| 19 | 1931277 | 8 | NUT, Hex, Flange Whizlock, 5/16-18 |

Not for
Reproduction

Footnotes:

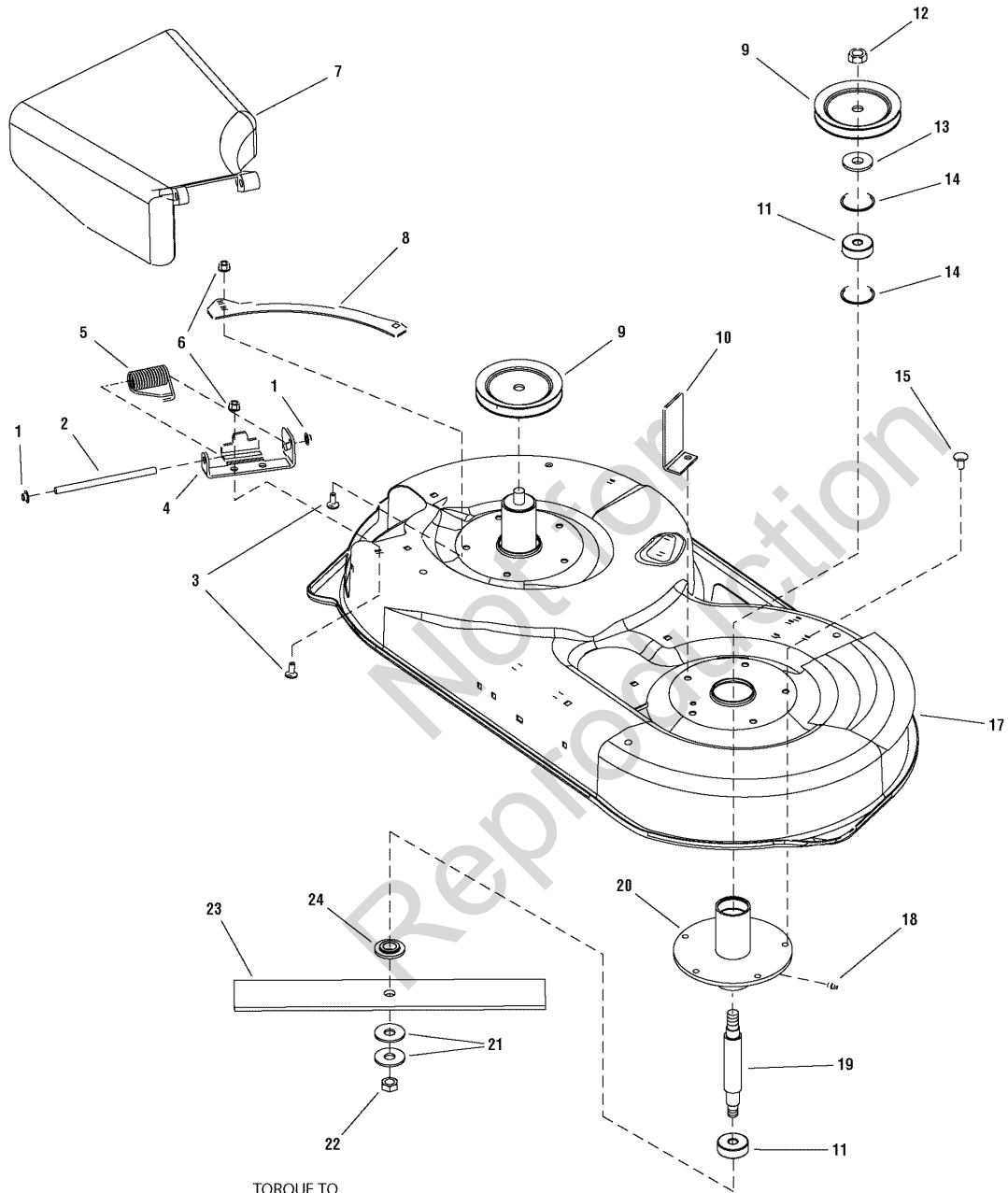


Lift Group - Manual

| Item | Part No | Qty | Description |
|------|----------|-----|---|
| 1 | 1730264 | 1 | DECAL, Height Of Cut |
| 2 | 1960252 | 1 | CARRIAGE BOLT, 1/4-20 x 5/8 G5 |
| 3 | 1727985A | 1 | QUADRANT, Lift Height 12GA |
| 4 | 1930641 | 1 | NUT, Hex Flange Whiz, 1/4-20 |
| 5 | 1722302 | 1 | GRIP |
| 6 | 1728070 | 1 | ROD, Lift Handle E-Coat, 17.7 LG |
| 7 | 1921333 | 1 | CAPSCREW, Hex Head, 5/16-18 x 1 |
| 8 | 1960044 | 1 | WASHER, Plain, 21/64 x 1-1/4 |
| 9 | 1729652 | 1 | SPRING, Torsion, 2.12 LG Black |
| 10 | 1728990A | 1 | CLEVIS, Lift 7GA |
| 11 | 1727935 | 1 | SPACER, Pivot 0.330ID 1.76OD .37TH Powdered Metal |
| 12 | 1931277 | 3 | NUT, Hex, Flange Whizlock, 5/16-18 |
| 15 | 1960074 | 4 | CLIP, Spring |
| 16 | 1960170 | 2 | WASHER, 1/2 |
| 17 | 721221 | 2 | PIN, Threaded Shoulder |
| 18 | 1731417A | 2 | ARM, Lift Rear 10GA |
| 19 | 1928352 | 2 | NUT, Hex, Flange, Whizlock, 5/16-18 x 1/2 |
| 20 | 1732070 | 2 | DECAL, CAUTION! Pinch Point |
| 21 | 1732426 | 2 | BOLT, Shoulder |
| 22 | 1960687 | 2 | NUT, Hex Flange, 3/8-16 ESNA |
| 23 | 1666294 | 2 | SPACER |
| 24 | 1731894 | 2 | TRUNNION, Powdered Metal |
| 25 | 1727955 | 2 | ROD, Lower Life, 10.00 LG |
| 27 | 1727954 | 1 | ROD, Lift, 5.43 LG |
| 28 | 1731939 | 1 | SPRING, Extension 5.10 LG Black |

Footnotes:

42" Housing, Arbor & Blades Group



TORQUE TO
80-90 FT/LBS
108.8-122.4 Nm

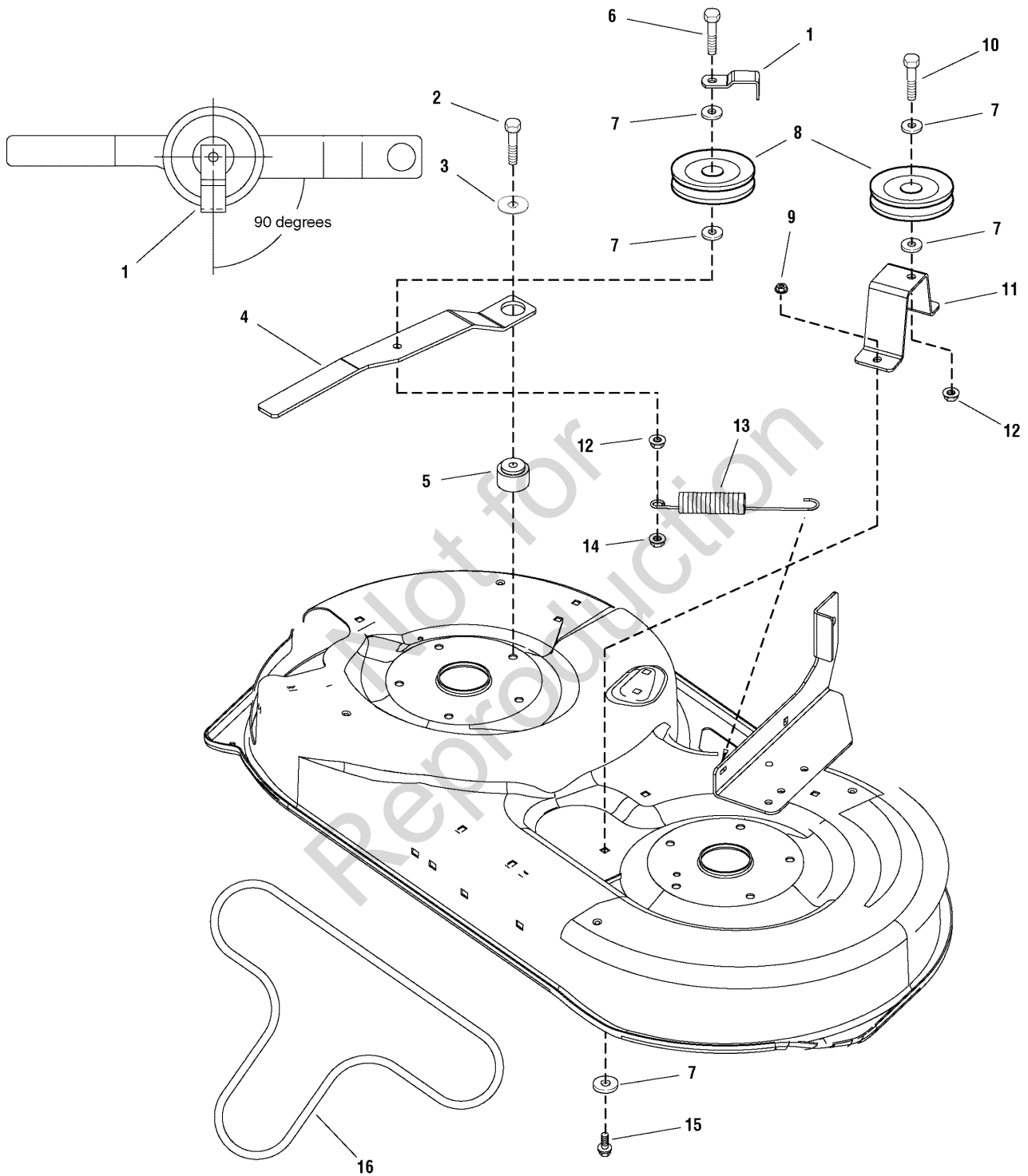
42" Housing, Arbor & Blades Group

| Item | Part No | Qty | Description |
|------|----------|-----|--|
| 1 | 1960093 | 2 | NUT, Push, 3/8 |
| 2 | 721371 | 1 | ROD, Deflector |
| 3 | 1931333 | 6 | BOLT, Carriage, 5/16-18 x 3/4 |
| 4 | 721369A | 1 | BRACKET, Hinge 9 GA |
| 5 | 720154 | 1 | SPRING, Torsion |
| 6 | 1931277 | 6 | NUT, Hex, Flange Whizlock, 5/16-18 |
| 7 | 721339 | 1 | DEFLECTOR & SUPPORT ASSEMBLY, Chute Riveted |
| 8 | 721083A | 2 | PLATE, Rear |
| 9 | 1732354 | 2 | PULLEY, 5.50, .68" Deep-Groove |
| 10 | 1731209A | 1 | UPSTOP, "L" 10GA |
| 11 | 2108202 | 2 | BEARING, Upper |
| 12 | 1922014 | 2 | NUT, Hex Lock, ESNA Light, 5/8-18, Thin |
| 13 | 7072440 | 2 | SPACER, Pulley, 38" Deck |
| 14 | 7012491 | 2 | RETAINING RING, Extension, 1-3/4 |
| 15 | 1923683 | 10 | SCREW, Hex, Washer Head, Taptite, 3/8-16 x 3/4 |
| 17 | 1730100D | 1 | HOUSING, 42" |
| 18 | 1704314 | 1 | FITTING, Grease |
| 19 | 7072537 | 1 | SHAFT, Spindle, 38" Deck |
| 20 | 1731372A | 2 | TUBE & PLATE ASSEMBLY, Spindle |
| 21 | 7024467 | 4 | WASHER, Belleville |
| 22 | 7091633 | 2 | NUT, Hex 9/16-18 |
| 23 | 1731898A | 2 | BLADE, Mower 42" |
| 24 | 1731917 | 2 | WASHER, Spindle Blade Powdered Metal |

Not for
Reproduction

Footnotes:

42" Mower Deck - Belt, Idler Arm & Hitch Group



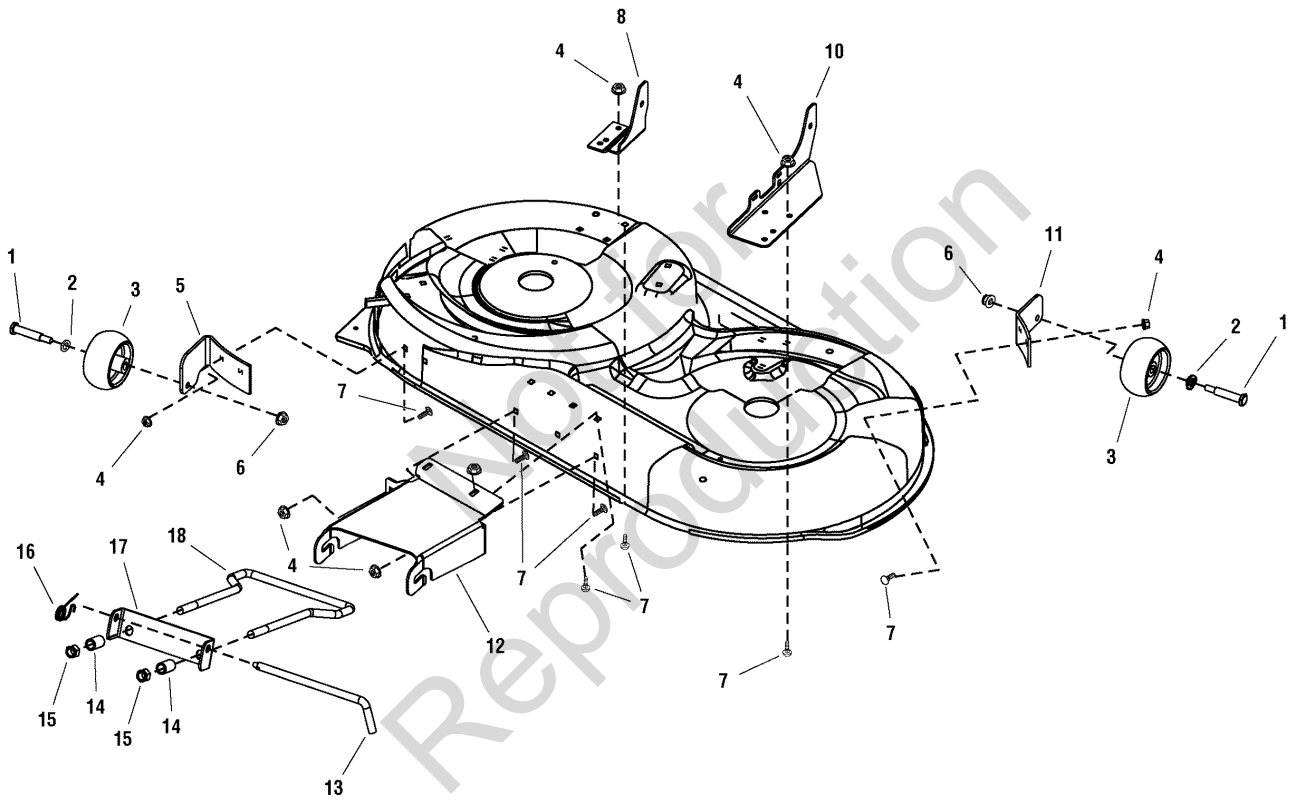
42" Mower Deck - Belt, Idler Arm & Hitch Group

| Item | Part No | Qty | Description |
|------|----------|-----|--|
| 1 | 1732884A | 1 | GUARD, Spring |
| 2 | 2860361 | 1 | CAPSCREW, Hex Washer Head, Taptite, 3/8-16 x 2 |
| 3 | 1924356 | 1 | WASHER, Plain, 13/32 x 1-1/2 x 1/8 |
| 4 | 1731944A | 1 | ARM |
| 5 | 1729007 | 1 | SPACER, 0.387 ID x 1-1/2 OD x 1.04 LG Powdered Metal |
| 6 | 1922130 | 1 | CAPSCREW, Hex Head, 3/8-16 x 2-1/4 |
| 7 | 1922755 | 4 | WASHER, 3/8 |
| 8 | 7018574 | 2 | IDLER, Flat |
| 9 | 1931277 | 2 | NUT, Hex, Flange Whizlock, 5/16-18 |
| 10 | 1921971 | 1 | CAPSCREW, Hex Head, 3/8-16 X 1-3/4 |
| 11 | 1731911A | 1 | SUPPORT, Idler |
| 12 | 1931211 | 2 | NUT, Whizlock, 3/8-16 |
| 13 | 1731311 | 1 | SPRING, Extension 07.75 LG Black |
| 14 | 1930645 | 1 | NUT, 3/8-16, Hex Flange MAC Locking Large, Black |
| 15 | 1923325 | 2 | CAPSCREW, Hex Head, 5/16-18 x .88 |
| 16 | 1732955 | 1 | V-BELT, 94.45 LG A-Wedge Aramid, .44" Deep-Groove |

Not for
Reproduction

Footnotes:

42" Mower Deck - Height Adjustment & Roller Bar Group



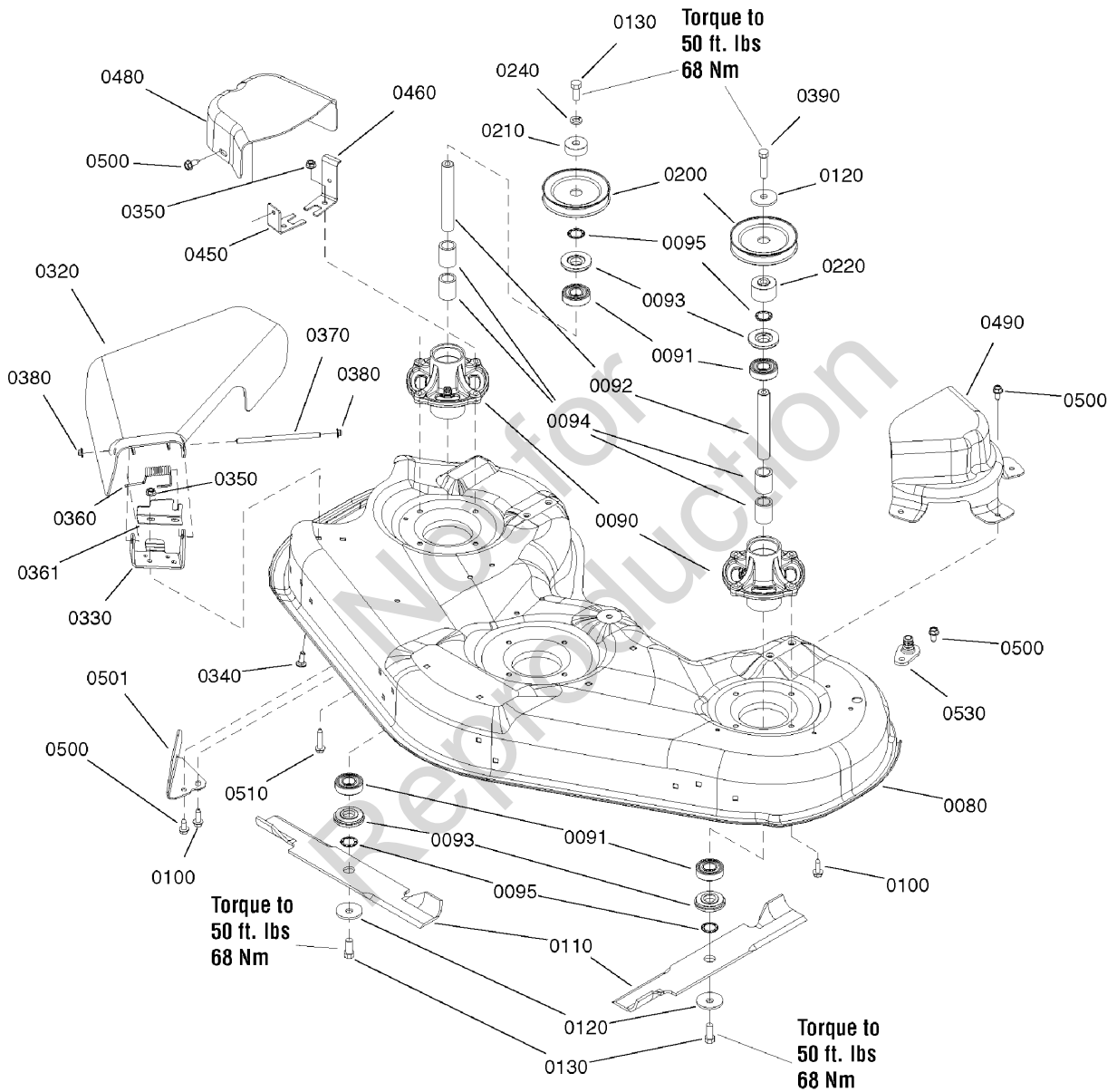
42" Mower Deck - Height Adjustment & Roller Bar Group

| Item | Part No | Qty | Description |
|------|----------|-----|--|
| 1 | 2108765 | 2 | BOLT, Rear Wheel |
| 2 | 1960170 | 2 | WASHER, 1/2 |
| 3 | 1714760 | 2 | WHEEL, Gauge |
| 4 | 1931277 | 11 | NUT, Hex, Flange Whizlock, 5/16-18 |
| 5 | 1731402A | 1 | SUPPORT, Gauge Wheel RH 7 GA |
| 6 | 1960687 | 2 | NUT, Hex Flange, 3/8-16 ESNA |
| 7 | 1931333 | 11 | BOLT, Carriage, 5/16-18 x 3/4 |
| 8 | 1730072D | 1 | SUPPORT, Mower RH |
| 10 | 1730071D | 1 | SUPPORT, Mower LH |
| 11 | 1731403A | 1 | SUPPORT, Gauge Wheel LH 7 GA |
| 12 | 1731966D | 1 | HITCH, Front 42" Mower |
| 13 | 1731414 | 1 | PIN, Hitch |
| 14 | 1679166 | 2 | SPACER, .532 ID x 3/4 OD x 1-1/4 LG Yellow |
| 15 | 1960379 | 2 | NUT, ESNA, Lock, 1/2-13 (Thin) |
| 16 | 2176012 | 1 | CLIP, Pin, Safety |
| 17 | 1730221A | 1 | HANGER, Front Mower |
| 18 | 1730097 | 1 | ROD, Bail Mowers Yellow |

Not for
Reproduction

Footnotes:

46" Mower Deck - Housing, Arbor & Blades Group

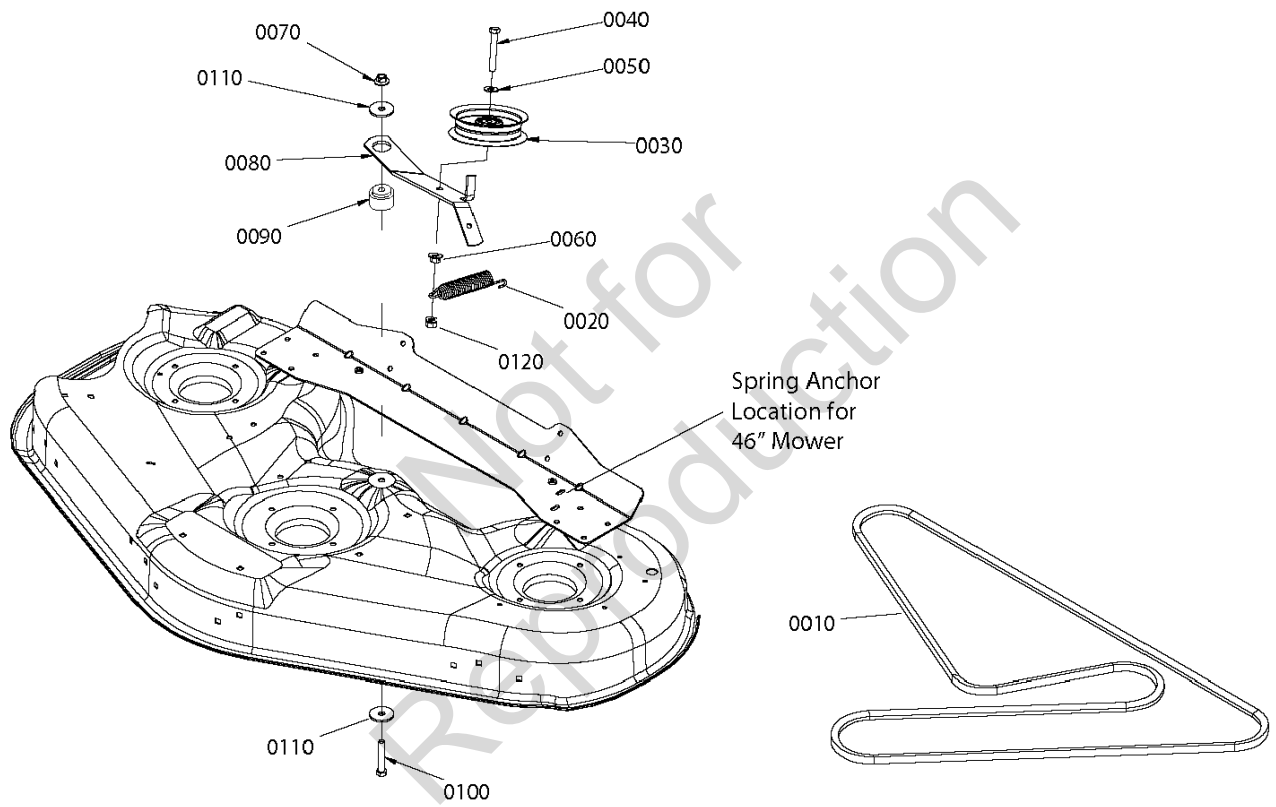


46" Mower Deck - Housing, Arbor & Blades Group

| Item | Part No | Qty | Description |
|------|----------|-----|--|
| 0080 | 1735734D | 1 | HOUSING, 46" MOWER |
| 0090 | 1735573 | 3 | HOUSING, SPINDLE, CAST ALUM MACH'D W/FTG |
| 0091 | 1735399 | 6 | BEARING, BALL 20MM 46" MWR |
| 0092 | 1735326 | 3 | SHAFT, SPINDLE 20MM DIA 134.60MM LG |
| 0093 | 1735323 | 6 | SHIELD, ARBOR 2.050OD 46" MWR |
| 0094 | 1735328 | 6 | SPACER, BEARING PWDR MTL 46" MWR |
| 0095 | 1960766 | 6 | RING, SELF LOCKING 46" MWR |
| 0100 | 1960373 | 10 | CAPSCREW, Hex Washer Head Taptite, 5/16-18X1.0 BLK |
| 0110 | 1739889 | 3 | BLADE, MOWER 16.13" LG 46" MWR |
| 0120 | 1656916 | 4 | WASHER, SPRING 0.475IDX1.75ODX.156TH BLK |
| 0130 | 1920676 | 5 | CAPSCREW, HEX HD 7/16-14X1.000 G5 BLK |
| 0200 | 1735686 | 3 | PULLEY, 4.6 OD 11GA SPLIT 46" MWR |
| 0210 | 1735579 | 2 | SPACER, LOWER DRIVE 46" MWR |
| 0220 | 1736445 | 1 | SPACER, PULLEY P'MTL 46" MWR ZTR |
| 0240 | 1918199 | 2 | LOCKWSHER, SPRING .438 BLK |
| 0320 | 1735447 | 1 | DEFLECTOR, DISCH PLASTIC 46/52 DECKS |
| 0330 | 1736365A | 1 | PIVOT, HINGE |
| 0340 | 1931333 | 2 | BOLT, RD HD SH SQ NK 5/16-18X0.750 G5 BLK |
| 0350 | 1931277 | 4 | NUT, HEX FLANGE 5/16-18, WHIZ LK SM, BLK |
| 0360 | 1736364 | 1 | SPRING, TORS DEFLECTOR 2.16LG 46" MWR |
| 0361 | 1737359A | 1 | SHIELD, HINGE |
| 0370 | 1736366 | 1 | ROD, DEFLECTOR, YELLOW ZINC |
| 0380 | 7012542 | 2 | NUT, PUSH, 5/16 BZ |
| 0390 | 1923027 | 1 | CAPSCREW, HEX HD 7/16-14X1.750 G5 BLK |
| 0450 | 1736518A | 1 | BRKT, BELT COVER, FRONT |
| 0460 | 1736519A | 1 | BRKT, BELT COVER, REAR |
| 0480 | 1735752 | 1 | COVER, BELT BLACK POLY RH 46 + 52" MWRS |
| 0490 | 1735750 | 1 | COVER, BELT LH BLACK PLASTIC 46" MOWER |
| 0500 | 1664847 | 7 | CAPSCREW, Hex Washer Head Taptite, 5/16-18X0.750 BLK |
| 0501 | 1737279A | 1 | BAFFLE, PINCHOFF |
| 0510 | 1930600 | 2 | CAPSCREW, Hex Washer Head Taptite, 5/16-18X1.500 BLK |
| 0520 | 1736898 | 1 | WASHOUT PORT-CONNECTOR 46+52" BLK POLY |
| 0530 | 1735716 | 1 | ADAPTER, WASHOUT PORT 46+52" PLASTIC |

Footnotes:

46" Mower Deck - Clutch Group



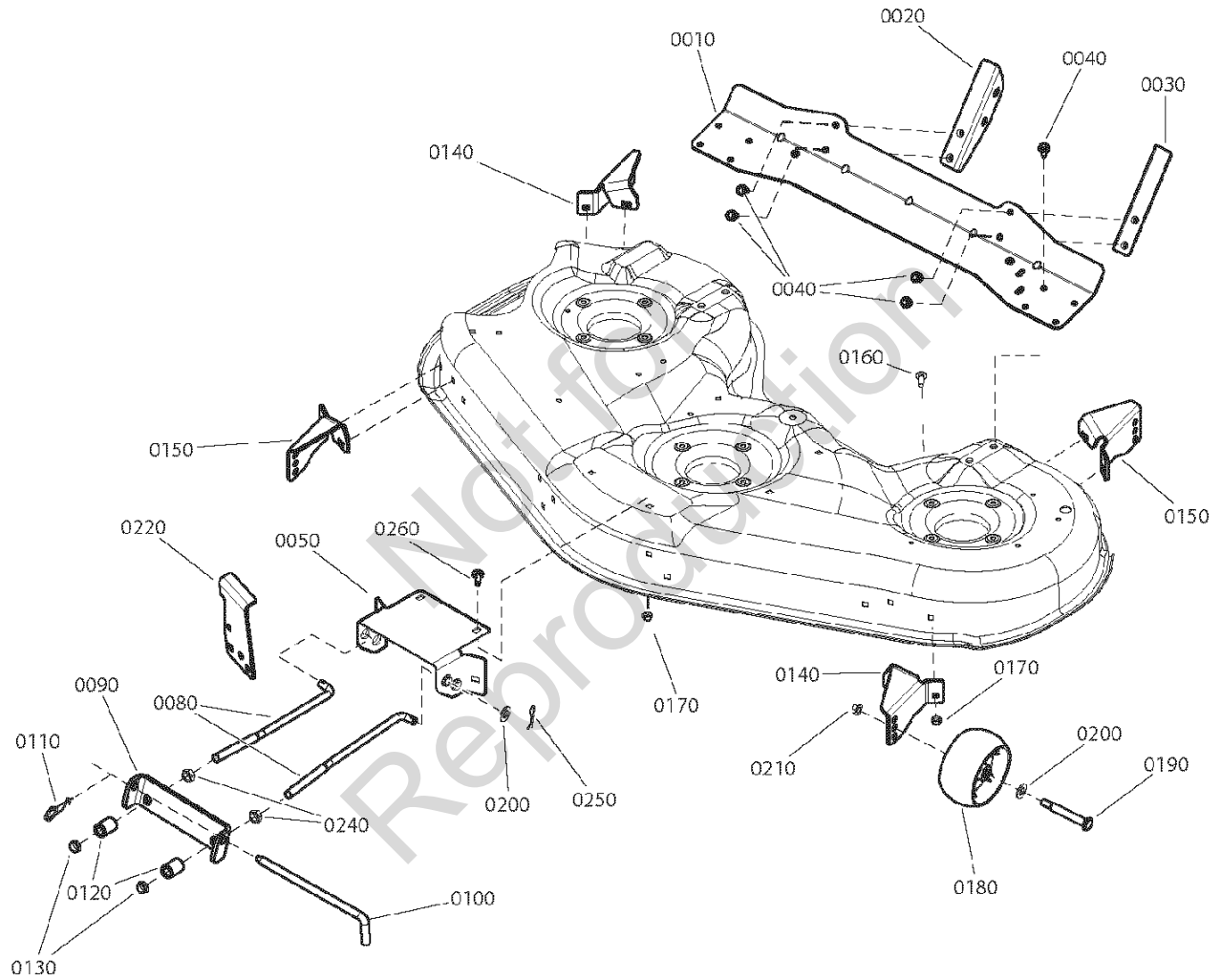
46" Mower Deck - Clutch Group

| Item | Part No | Qty | Description |
|------|----------|-----|---|
| 0010 | 1732956 | 1 | V-BELT, HA 118.00 LG A-WEDGE ARAMID |
| 0020 | 1715772 | 1 | SPRING, EXTN 0.987ODX 05.25 LG .112 WIRE |
| 0030 | 1736540 | 1 | PULLEY, IDLER 46, 52" MWRS |
| 0040 | 1933685 | 1 | CAPSCREW, HEX HD 3/8-16X2.500 G5 FT BLK |
| 0050 | 1924940 | 1 | WASHER, 0.375(0.41IDX0.87ODX.08THK) BLK |
| 0060 | 1931211 | 1 | NUT, HEX FLANGE 3/8-16 WHIZ LK SMALL BLK |
| 0070 | 1960339 | 1 | NUT, HEX FLANGE 3/8-16 MAC LK LARGE BLK |
| 0080 | 1736551A | 1 | ARM, IDLER |
| 0090 | 1729007 | 1 | SPACER, 0.387IDX1.50 ODX1.04 LG PM YELLOW |
| 0100 | 1923701 | 1 | CAPSCREW, HEX HD 3/8-16X2.000 G5 BLK |
| 0110 | 1924356 | 2 | WASHER, 0.375(0.41IDX1.50ODX.12THK) BLK |
| 0120 | 7091585 | 1 | NUT, Center Lock, 3/8-16 YZ |

Not for
Reproduction

Footnotes:

Height Adjust Group - Frame Hung Mower

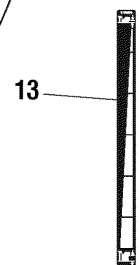
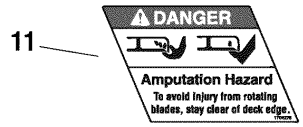
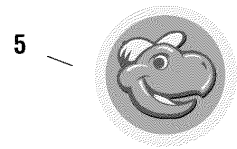
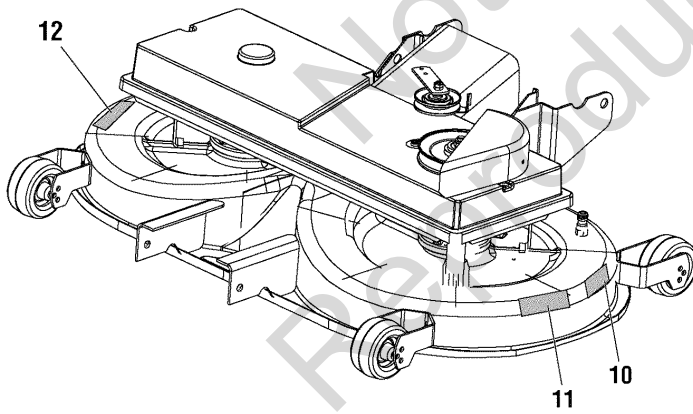
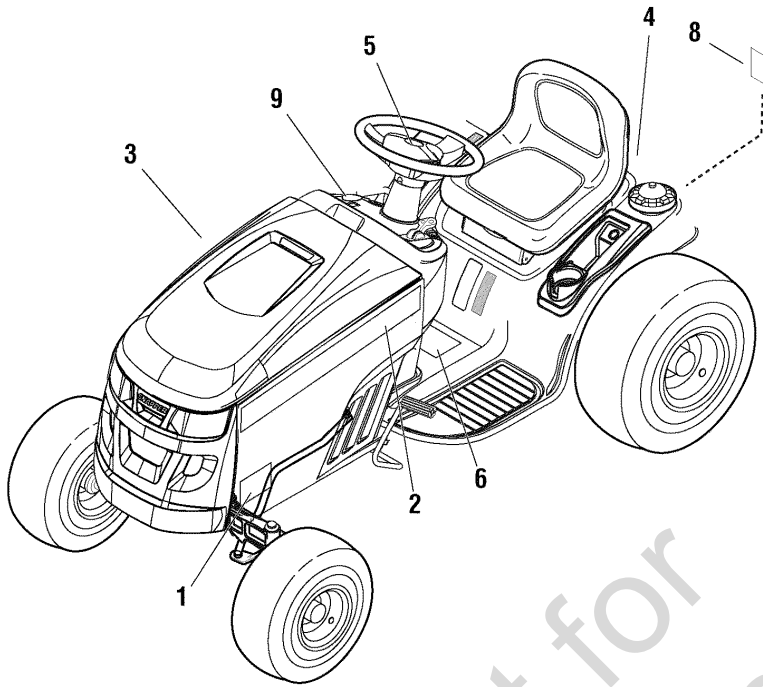


Height Adjust Group - Frame Hung Mower

| Item | Part No | Qty | Description |
|------|----------|-----|---|
| 0010 | 1736070A | 1 | SUPPORT, REAR CROSS |
| 0020 | 1736072A | 1 | BRKT, REAR MOWER PICKUP, TRACTOR |
| 0030 | 1736073A | 1 | BRKT, REAR MOWER PICKUP, TRACTOR |
| 0040 | 1960373 | 6 | CAPSCREW, Hex Washer Head Taptite, 5/16-18X1.00 BLK |
| 0050 | 1736071A | 1 | HITCH, FRONT, 46 / 52 MOWER |
| 0080 | 1736081 | 2 | ROD, FRONT BAIL 46,52" MWR |
| 0090 | 1737059A | 1 | HANGER, FRONT MOWER |
| 0100 | 1731414 | 1 | ROD, LATCH .500DIA 9" LG 42" BLD REG YEL |
| 0110 | 2176012 | 1 | RETAINER, PIN SPRING FOR .312/.375PIN BLK |
| 0120 | 1679166 | 2 | SPACER, 0.520ID 0.88 OD 1.185LG P MTL, YEL |
| 0130 | 1960379 | 2 | NUT, HEX LOCK ESNA LIGHT 1/2-13 THIN BLK |
| 0140 | 1736074A | 2 | BRKT, GAUGE WHEEL, RH |
| 0150 | 1736075A | 2 | BRKT, GAUGE WHEEL, LH |
| 0160 | 1931334 | 13 | BOLT, RD HD SH SQ NK 5/16-18X0.875 G5 BLK |
| 0170 | 1931277 | 13 | NUT, HEX FLANGE 5/16-18, WHIZ LK SM, BLK |
| 0180 | 1736896 | 4 | WHEEL, GAUGE BLACK POLY 5" DIA |
| 0190 | 1736539 | 4 | BOLT, SHLDR 3/8-16X3.41 .750 THRD YELLOW |
| 0200 | 1960170 | 6 | WASHER, 0.500(0.51IDX1.00ODX.10THK) BLK |
| 0210 | 1960687 | 4 | NUT, HEX FLANGE 3/8-16 ESNA BLK |
| 0220 | 1736991A | 1 | UP STOP |
| 0240 | 1913744 | 2 | NUT, HEX JAM 1/2 JAM 1/2-13 NC-2B BLK |
| 0250 | 1960074 | 2 | CLIP, HAIR PIN .093DIA SPG WR1.625 LG |
| 0260 | 1931333 | 2 | BOLT, Carriage 5/16-18X.750 G5 Blk |

Footnotes:

Decals Group - 42" Deck



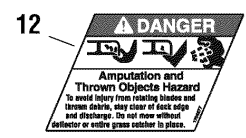
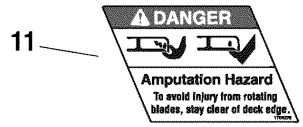
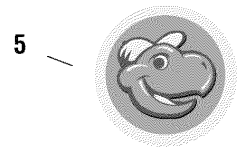
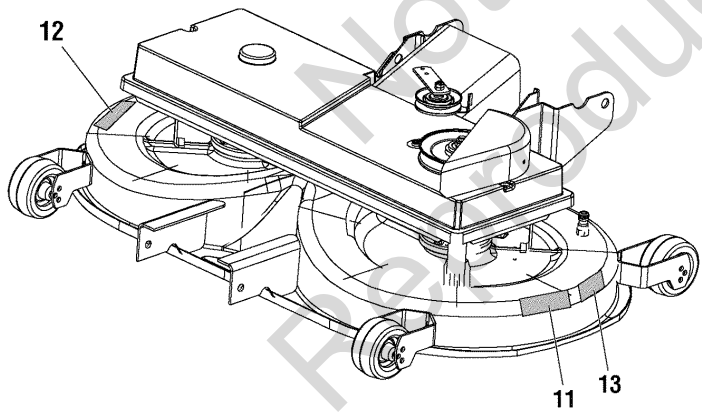
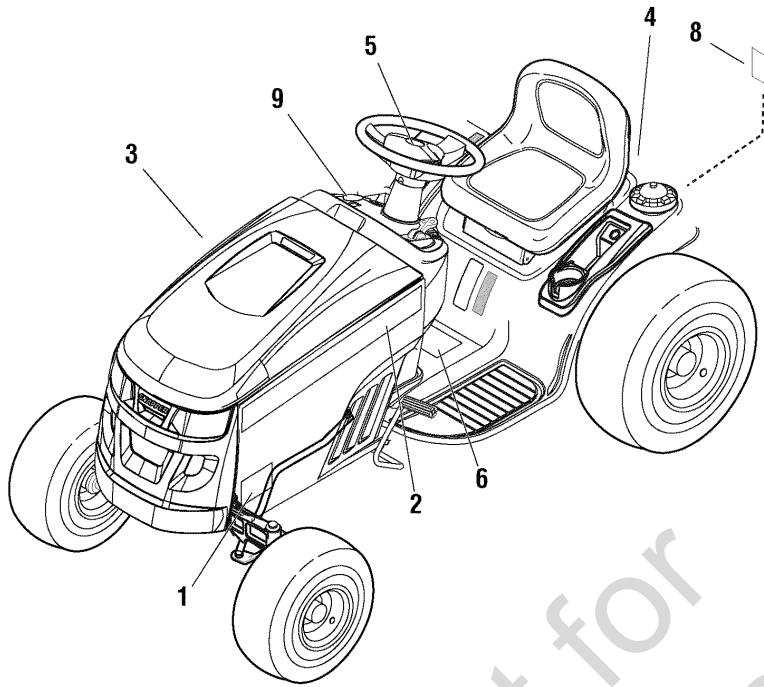
Decals Group - 42" Deck

| Item | Part No | Qty | Description |
|------|---------|-----|--|
| 1 | 1736870 | 2 | DECAL, 23HP Snapper |
| 2 | 7102192 | 1 | DECAL, Snapper LH Stripe |
| 3 | 7102191 | 1 | DECAL, Snapper RH Stripe |
| 4 | 7102196 | 1 | DECAL, Snapper Rear |
| 5 | 1736872 | 1 | DECAL, Snapper Steering Wheel |
| 6 | 1734879 | 1 | DECAL, Tunnel |
| 8 | 1730202 | 1 | DECAL, Trans/Tow Release Lever |
| 9 | 1722806 | 1 | DECAL, Ignition Switch White/Blk |
| 10 | 7102194 | 1 | DECAL, 42" Deck |
| 11 | 1704276 | 2 | DECAL, Danger Blades |
| 12 | 1704277 | 1 | DECAL, Danger, Do No Operate without Deflector |
| 13 | 1730264 | 1 | DECAL, Mower Height |

Not for
Reproduction

Footnotes:

Decals Group - 46" Deck

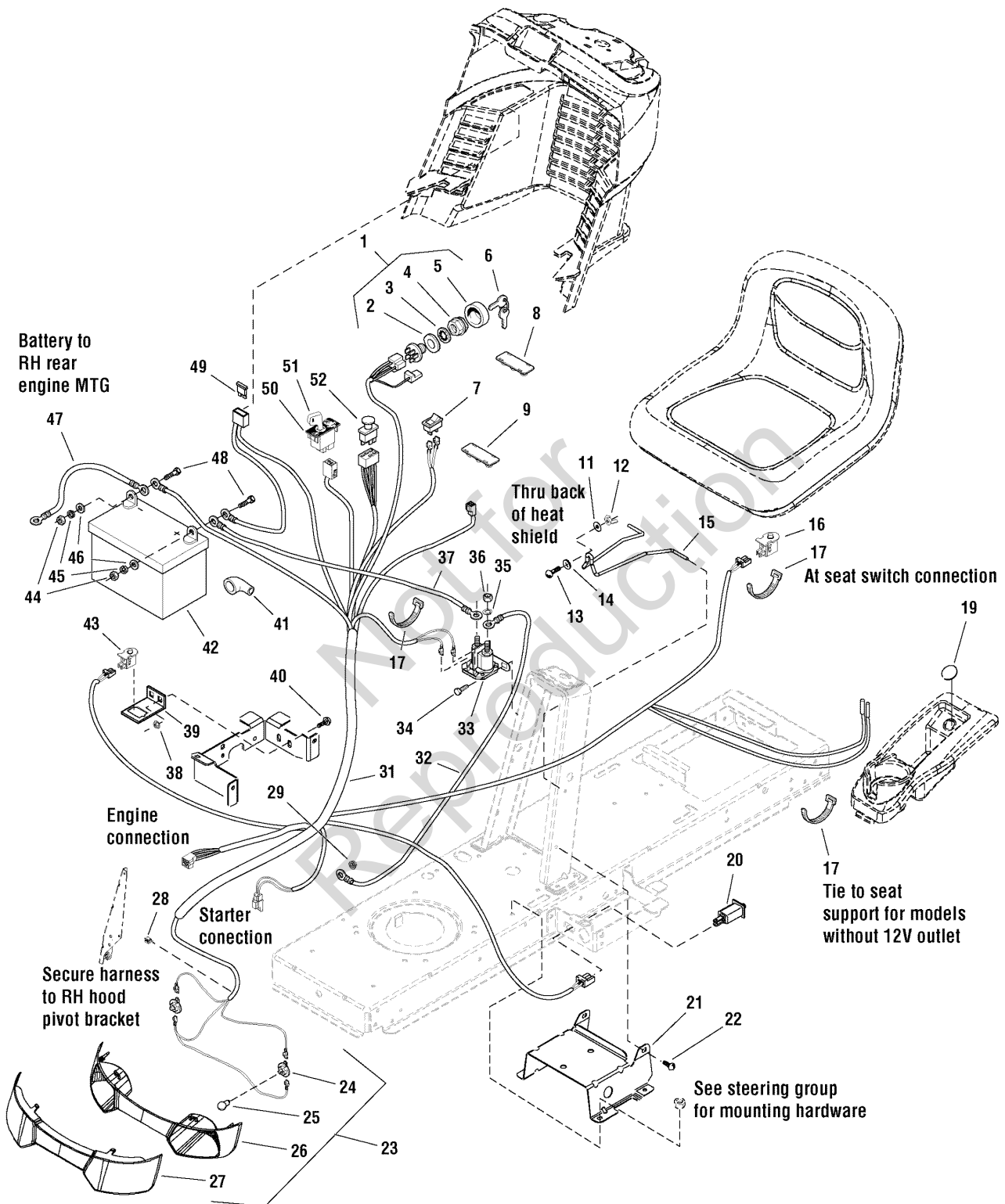


Decals Group - 46" Deck

| Item | Part No | Qty | Description |
|------|---------|-----|--|
| 1 | 1736871 | 2 | DECAL, 24HP Snapper |
| 2 | 7102192 | 1 | DECAL, Snapper LH Stripe |
| 3 | 7102191 | 1 | DECAL, Snapper RH Stripe |
| 4 | 7102196 | 1 | DECAL, Snapper Rear |
| 5 | 1736872 | 1 | DECAL, Snapper Steering Wheel |
| 6 | 1734879 | 1 | DECAL, Tunnel |
| 8 | 1730202 | 1 | DECAL, Trans/Tow Release Lever |
| 9 | 1722806 | 1 | DECAL, Ignition Switch White/Blk |
| 11 | 1704276 | 2 | DECAL, Danger Blades |
| 12 | 1704277 | 1 | DECAL, Danger, Do No Operate without Deflector |
| 13 | 7102193 | 1 | DECAL, Decal, 46" Deck (Not Shown) |

Not for
Reproduction

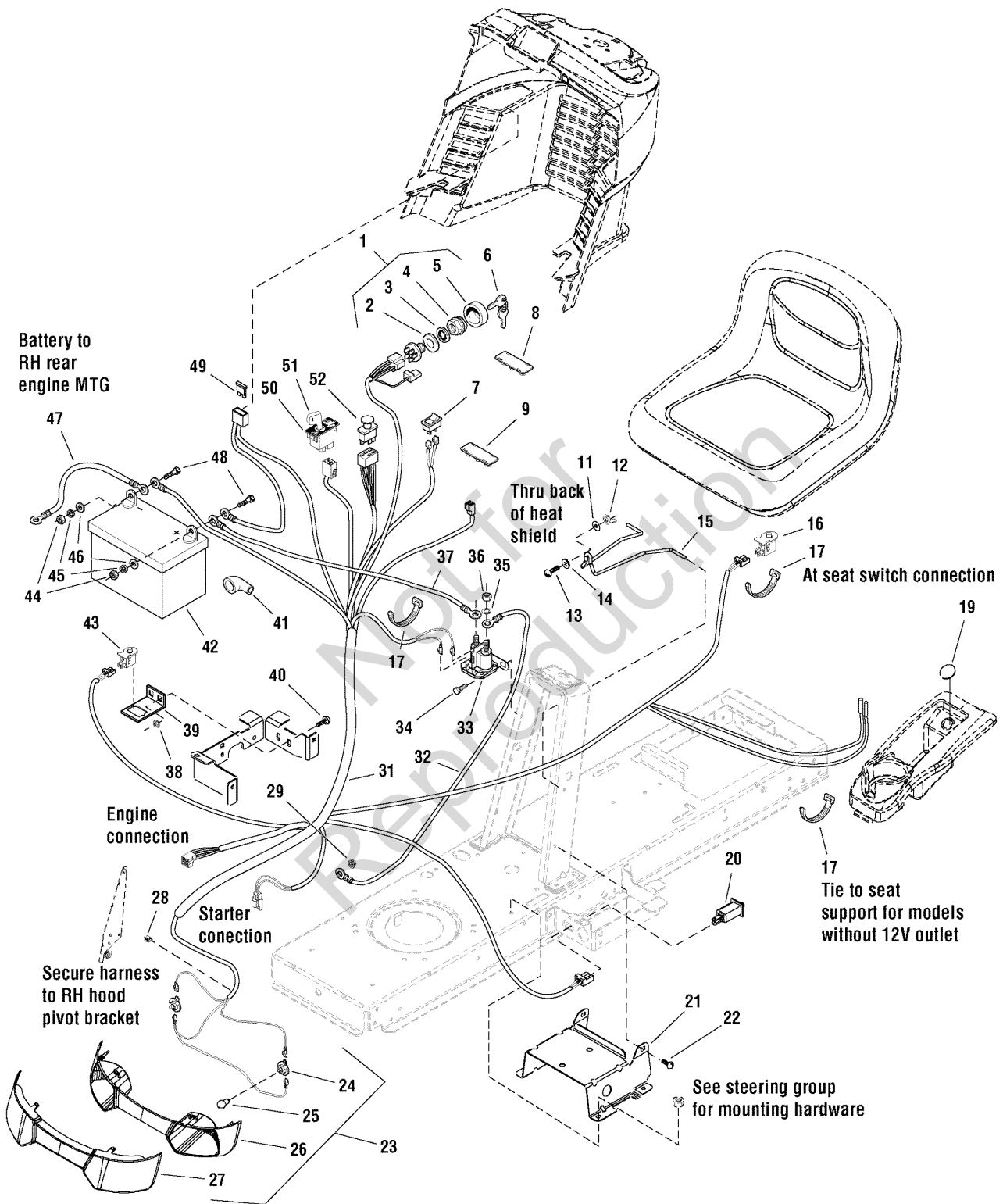
Footnotes:



Electrical Group

| Item | Part No | Qty | Description |
|------|----------|-----|--|
| 1 | 1686734 | 1 | SWITCH ASSEMBLY, Ignition, 6-Pole (Includes Ref. 2, 3, 4 & 5) |
| 2 | 2101025 | 1 | WASHER, 5/8 |
| 3 | 1960547 | 1 | LOCKWASHER, Internal Tooth, 5/8 |
| 4 | 1717549 | 1 | NUT, Hex, Flange, 5/8-32 |
| 5 | 1717550 | 1 | COVER, Ignition |
| 6 | 1737836 | 1 | KEYS, Blister Pk (KIDS+MWRS DON'T MIX) (set of two, one coated) (Was 1717163 ignition key, set of 2) |
| 7 | 1716951 | 1 | SWITCH, Headlights, 2 Terminal |
| 8 | 1722611 | 1 | PLUG, Hole, Square |
| 9 | 1729993 | 1 | PLUG, Hour Meter |
| 11 | 1960353 | 1 | WASHER, Plain, 1/4 (6 Total for Export) |
| 12 | 2860293 | 1 | NUT, Wing, 1/4-20 |
| 13 | 1931318 | 1 | CARRIAGE BOLT, 1/4-20 x 7/8 |
| 14 | 1960518 | 1 | NUT, Push On |
| 15 | 1730007 | 1 | HOLD DOWN, Battery |
| 16 | 1732005 | 1 | SWITCH, Push Button (NC) |
| 17 | 1701011 | 3 | TIE, Self Locking 7-5/16 |
| 19 | 1732007 | 1 | PLUG, Hole Models W/O 12V Adapter |
| 20 | 1732006 | 1 | SWITCH, Push Button (NO/NC) |
| 21 | 1727282A | 1 | SUPPORT, Battery 12 GA |
| 22 | 1930601 | 4 | SCREW, Taptite, 5/16-18 x 5/8 |
| 23 | 1727296 | 1 | HEADLIGHT ASSEMBLY (Includes Ref. 24, 25, 26 & 27) |
| 24 | 1723451 | 2 | SOCKET ASSEMBLY |
| 25 | 1677371 | 2 | BULB, 1141-12V 21CP |
| 26 | 1728973 | 1 | REFLECTOR, Headlight |
| 27 | 1728974 | 1 | LENS, Headlight |
| 28 | 2172434 | 1 | CLIP, Wire |
| 29 | 1960294 | 1 | NUT, Hex, Flange, 1/4-20 |
| 31 | 1728097 | 1 | HARNESS, Wiring |
| 32 | 1721830 | 1 | CABLE, Solenoid to Starter |
| 33 | 1728963 | 1 | SOLENOID |
| 34 | 1925003 | 2 | SCREW, Taptite, 1/4-20 x 1/2 |
| 35 | 2820426 | 2 | LOCKWASHER, External Tooth, 5/16 |
| 36 | 2820263 | 2 | NUT, Hex, 5/16-24 NF |
| 37 | 1716549 | 1 | CABLE, #6 x 10 Long, with 2 Ring Terminals, Battery to Solenoid |
| 38 | 1931277 | 2 | NUT, Hex, Flange Whizlock, 5/16-18 |
| 39 | 1728026A | 1 | SUPPORT, RMO Switch |
| 40 | 1931333 | 2 | CARRIAGE BOLT, 5/16-18 x 3/4 |
| 41 | 1677296 | 1 | BOOT, Insulator |
| 42 | 1685215 | 1 | BATTERY |
| 43 | 1732004 | 1 | SWITCH, Push Button (NO), Reverse Pedal |
| 44 | 2816622 | 2 | NUT, Hex, Full, 1/4-20 |
| 45 | 2816964 | 2 | LOCKWASHER, 1/4 |
| 46 | 2821319 | 2 | WASHER, 1/4 I.D. |
| 47 | 1713163 | 1 | CABLE, Battery to Ground |

Footnotes:



Electrical Group

| Item | Part No | Qty | Description |
|------|---------|-----|----------------------------------|
| 48 | 2823341 | 2 | CAPSCREW, Hex Head, 1/4-20 x 3/4 |
| 49 | 1731957 | 1 | FUSE, Wiring Harness |
| 50 | 1726556 | 1 | SWITCH, RMO Module Only |
| 51 | 1726557 | 1 | KEY, RMO Module Plastic |
| 52 | 1722887 | 1 | SWITCH, PTO, Push/Pull Symbols |

Not for
Reproduction

Footnotes:

Not for
Reproduction

Hardware Identification & Torque Specifications

| Torque Specification Chart | | | | | | | | |
|--|-----------|------|-----------|------|------------|------|------------|------|
| FOR STANDARD METRIC MACHINE HARDWARE (Tolerance ± 20%) | | | | | | | | |
| Property Class | 5.6 | | 8.8 | | 10.9 | | 12.9 | |
| | Class 5.6 | | Class 8.8 | | Class 10.9 | | Class 12.9 | |
| Size Of Hardware | in/lbs | | in/lbs | | in/lbs | | in/lbs | |
| | ft/lbs | Nm. | ft/lbs | Nm. | ft/lbs | Nm. | ft/lbs | Nm. |
| M3 | 5.88 | .56 | 13.44 | 1.28 | 19.2 | 1.80 | 22.92 | 2.15 |
| M4 | 13.44 | 1.28 | 30.72 | 2.90 | 43.44 | 4.10 | 52.56 | 4.95 |
| M5 | 26.4 | 2.50 | 60.96 | 5.75 | 5.97 | 8.10 | 7.15 | 9.7 |
| M6 | 44.64 | 4.3 | 7.3 | 9.9 | 10.3 | 14 | 12.1 | 16.5 |
| M7 | 5.2 | 7.1 | 12.1 | 16.5 | 16.9 | 23 | 19.9 | 27 |
| M8 | 7.7 | 10.5 | 17.7 | 24 | 25 | 34 | 29 | 40 |
| M10 | 15 | 21 | 35 | 48 | 50 | 67 | 59 | 81 |
| M12 | 26 | 36 | 61 | 83 | 86.2 | 117 | 103 | 140 |
| M14 | 42 | 58 | 101 | 132 | 136 | 185 | 162 | 220 |
| M16 | 64 | 88 | 147 | 200 | 210 | 285 | 250 | 340 |
| M18 | 89 | 121 | 202 | 275 | 287 | 390 | 346 | 470 |
| M20 | 126 | 171 | 290 | 390 | 405 | 550 | 486 | 660 |
| M22 | 169 | 230 | 390 | 530 | 559 | 745 | 656 | 890 |
| M24 | 217 | 295 | 497 | 375 | 708 | 960 | 840 | 1140 |
| M27 | 320 | 435 | 733 | 995 | 1032 | 1400 | 1239 | 1680 |
| M30 | 435 | 590 | 995 | 1350 | 1401 | 1900 | 1681 | 2280 |
| M33 | 590 | 800 | 1349 | 1830 | 1902 | 2580 | 2278 | 3090 |
| M36 | 759 | 1030 | 1740 | 2360 | 2441 | 3310 | 2935 | 3980 |
| M39 | 988 | 1340 | 2249 | 3050 | 3163 | 4290 | 3798 | 5150 |

| Torque Specification Chart | | | | | | |
|---|-------------|-------|-------------|-------|-------------|---------|
| FOR STANDARD MACHINE HARDWARE (Tolerance ± 20%) | | | | | | |
| Hardware Grade | No Marks | | SAE Grade 5 | | SAE Grade 8 | |
| | SAE Grade 2 | | SAE Grade 5 | | SAE Grade 8 | |
| Size Of Hardware | in/lbs | | in/lbs | | in/lbs | |
| | ft/lbs | Nm. | ft/lbs | Nm. | ft/lbs | Nm. |
| 8-32 | 19 | 2.1 | 30 | 3.4 | 41 | 4.6 |
| 8-36 | 20 | 2.3 | 31 | 3.5 | 43 | 4.9 |
| 10-24 | 27 | 3.1 | 43 | 4.9 | 60 | 6.8 |
| 10-32 | 31 | 3.5 | 49 | 5.5 | 68 | 7.7 |
| 1/4-20 | 66 | 7.6 | 8 | 10.9 | 12 | 16.3 |
| 1/4-28 | 76 | 8.6 | 10 | 13.6 | 14 | 19.0 |
| 5/16-18 | 11 | 15.0 | 17 | 23.1 | 25 | 34.0 |
| 5/16-24 | 12 | 16.3 | 19 | 25.8 | 29 | 34.0 |
| 3/8-16 | 20 | 27.2 | 30 | 40.8 | 45 | 61.2 |
| 3/8-24 | 23 | 31.3 | 35 | 47.6 | 50 | 68.0 |
| 7/16-14 | 30 | 40.8 | 50 | 68.0 | 70 | 95.2 |
| 7/16-20 | 35 | 47.6 | 55 | 74.8 | 80 | 108.8 |
| 1/2-13 | 50 | 68.0 | 75 | 102.0 | 110 | 149.6 |
| 1/2-20 | 55 | 74.8 | 90 | 122.4 | 120 | 163.2 |
| 9/16-12 | 65 | 88.4 | 110 | 149.6 | 150 | 204.0 |
| 9/16-18 | 75 | 102.0 | 120 | 163.2 | 170 | 231.2 |
| 5/8-11 | 90 | 122.4 | 150 | 204.0 | 220 | 299.2 |
| 5/8-18 | 100 | 136 | 180 | 244.8 | 240 | 326.4 |
| 3/4-10 | 160 | 217.6 | 260 | 353.6 | 386 | 525.0 |
| 3/4-16 | 180 | 244.8 | 300 | 408.0 | 420 | 571.2 |
| 7/8-9 | 140 | 190.4 | 400 | 544.0 | 600 | 816.0 |
| 7/8-14 | 155 | 210.8 | 440 | 598.4 | 660 | 897.6 |
| 1-8 | 220 | 299.2 | 580 | 788.8 | 900 | 1,244.0 |
| 1-12 | 240 | 326.4 | 640 | 870.4 | 1,000 | 1,360.0 |

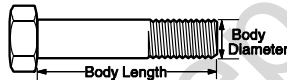
The guides and ruler furnished below are designed to help you select the appropriate hardware.



Nut, M8

Thread Diameter (mm)
Inside Diameter (in)
Threads per inch

Nut, 1/2-16



Screw, M8- 1.25 x 25

Thread Diameter (mm)
Body Diameter
Distance between threads (mm)
Threads per inch
Body Length (mm)
Body Length (in)

Screw, 1/2- 16 x 2



Standard Hardware Sizing

When a washer or nut is identified as 1/2" (M8), this is the *Nominal size*, meaning the *inside diameter* is 1/2 inch (8mm metric thread diameter); if a second number is present it represents the *threads per inch* (distance between threads).

When bolt or capscrew is identified as 1/2 - 16 x 2" (M8 - 1.25 x 50), this means the *Nominal size*, or body diameter is 1/2 inch (8mm metric thread diameter), the second number, 16, represents the *threads per inch*, (1.25 thread diameter). The final number is the body length of the bolt or screw, 2 inches (50mm).

NOTES

- These torque values are to be used for all hardware excluding: locknuts, self-tapping screws, thread forming screws, sheet metal screws and socket head setscrews.
- Recommended seating torque values for locknuts:
 - for prevailing torque locknuts - use 65% of grade5 torques.
 - for flange whizlock nuts and screws - use 135% of grade 5 torques.
- Unless otherwise noted on assembly drawings, all torque values must meet this specification.

Common Hardware Types

Hex Head Capscrew



Washer



Lockwasher



Carriage Bolt



Hex Nut



Wrench & Fastener Size Guide

| | | | | |
|----------------------------------|----------------------------------|----------------------------------|--|---------------------------------|
| 1/4" Bolt or Nut Wrench—7/16" | 5/16" Bolt or Nut Wrench—1/2" | 3/8" Bolt or Nut Wrench—9/16" | 7/16" Bolt or Nut Wrench (Bolt)—5/8" Wrench (Nut)—11/16" | 1/2" Bolt or Nut Wrench—3/4" |
| M6 Bolt or Nut Wrench—10mm | M8 Bolt or Nut Wrench—13mm | M10 Bolt or Nut Wrench—17mm | M12 Bolt or Nut Wrench—19mm | M14 Bolt or Nut Wrench—22mm |

Parts Manual for

SNAPPER®

HYDRO DRIVE ELECTRIC CLUTCH 42" & 46" LAWN TRACTOR LT-125 SERIES

Not for
Reproduction

IT IS THE POLICY OF BRIGGS & STRATTON CORP TO IMPROVE ITS PRODUCTS WHENEVER IT IS POSSIBLE AND PRACTICAL TO DO SO. WE RESERVE THE RIGHT TO MAKE CHANGES OR ADD IMPROVEMENTS AT ANY TIME WITHOUT INCURRING ANY OBLIGATION TO MAKE SUCH CHANGES ON PRODUCTS

Briggs & Stratton Yard Power Products Group

535 Macon Road
McDonough, GA, 30253 U.S.A.
800-935-2967

www.snapper.com

Copyright © 2010 Briggs & Stratton Corporation
Milwaukee, WI USA. All Rights Reserved

**Manual No. 7006275
Revision: A 8/20/2010**